

# LOMMAS

m  
o  
n  
o  
s  
o  
v  
a

s  
a  
v  
a  
k

[noun]

a pleasant environment between Maskavas foršate and Lomonosova street, where everyone feels the freedom to be in the role he wants to be



"PUBLISKĀS ĀRTELPAS DIZAINA UN BŪNIECĪBAS IECERES  
DOKUMENTĀCIJAS IZSTRĀDE TRĪS TERITORIJĀM" ID NR. RD PAD 2020/1

## LOMONOSOVA 12 C

Project desing / Projekta izstrādātāji

**Anna Alina Alehna** (RTU AF master 1)  
**Jurijs Elsaks** (RTU AF master 1)

Project tutors / Pasniedzēji

**Sandra Treija** (RTU Dr arch)  
**Alisa Korojova** (RTU Mgr arch)  
**Egons Berziņš** (RTU Dr arch)

Tutors / Pasniedzēji

**Marc Geldorf**  
**Helena Gutmane**  
**Ilze Rukšane**  
**Māris Bušs**

# TABLE OF CONTENTS

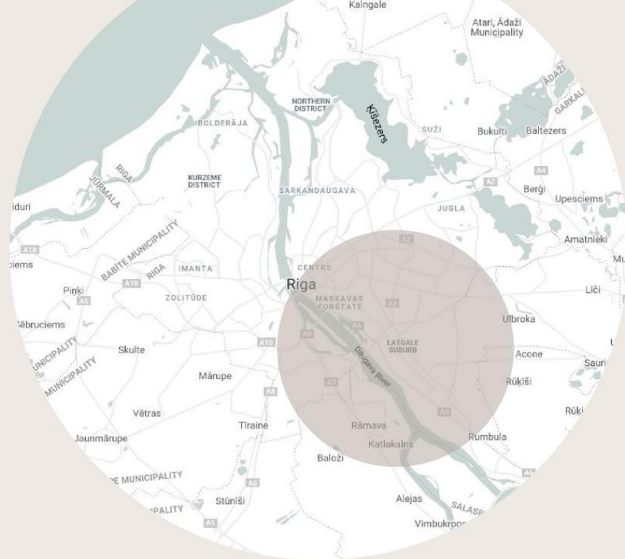
01\_PLACE ANALYSIS

02\_DESIGN TASKS

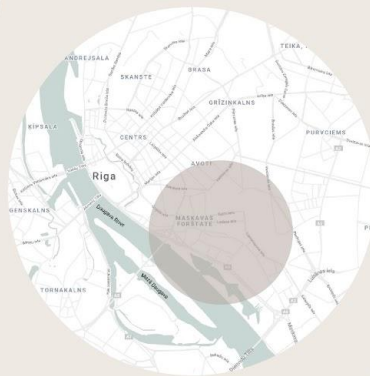
03\_SOLUTIONS

04\_FURTHER ACTIONS

# 01\_PLACE ANALYSIS



Riga East Executive Directorate //  
Rīgas Austrumu izpilddirekcija



Maskavas forštate neighbourhood  
aka **Maskačka**  
a suburb on the right bank of the  
D a u g a v a

area // platība: 8 km2



Design project location //  
Projekta teritorija

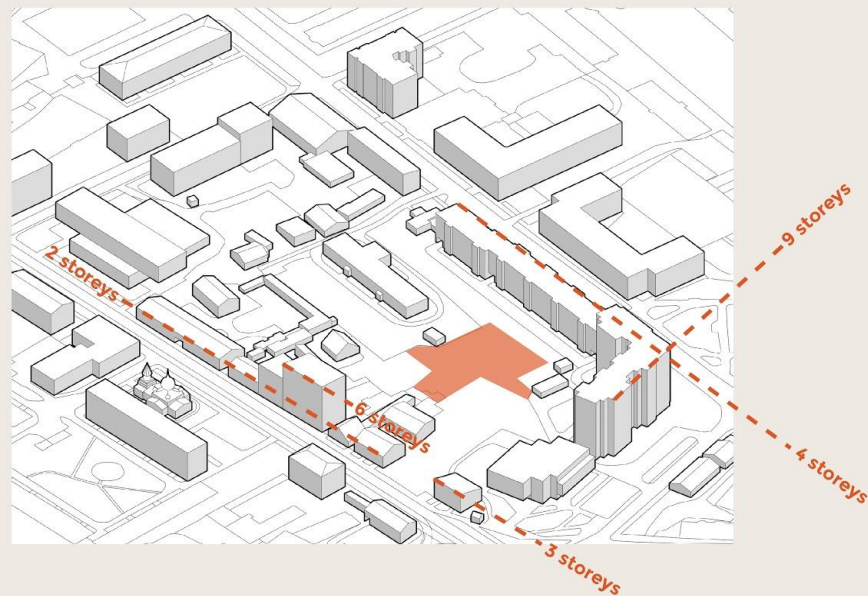
**Lomonosova 12c**  
Aiviekstes, Lomonosova, Rēznas,  
Maskavas street // iela  
**Kadastrs:** No. 0100 046 0075

# site jurisdiction

**Rīgas Domes Pilsētas Attīstības**  
**departaments.** Rīgas teritorijas  
plānojums 2006. – 2018.gadam. 2006.



# site scale

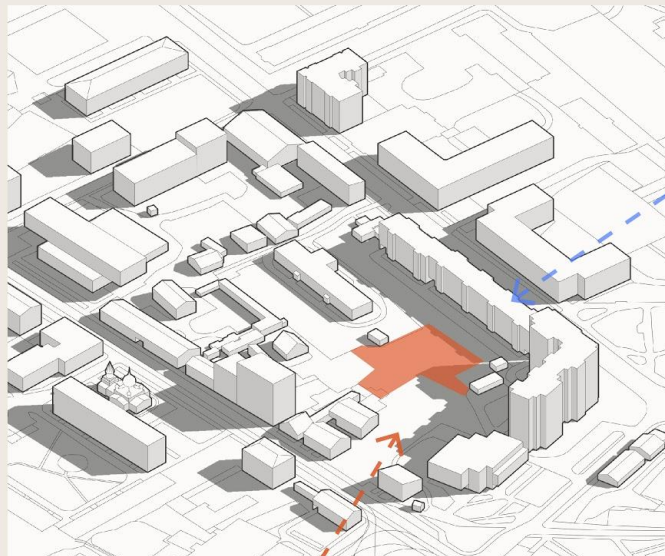


total area of the site : **1845m<sup>2</sup>**

site is surrounded by buildings from  
2 to 9 storeys



# site climate



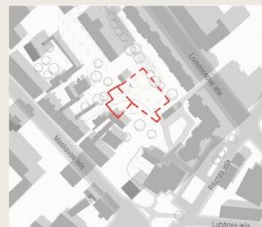
21st of March, **9:30**



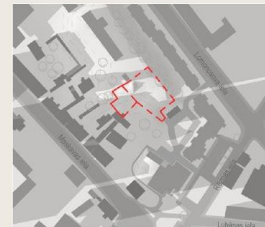
21st of March, **12:30**



21st of March, **15:30**



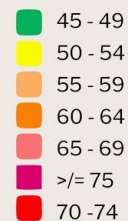
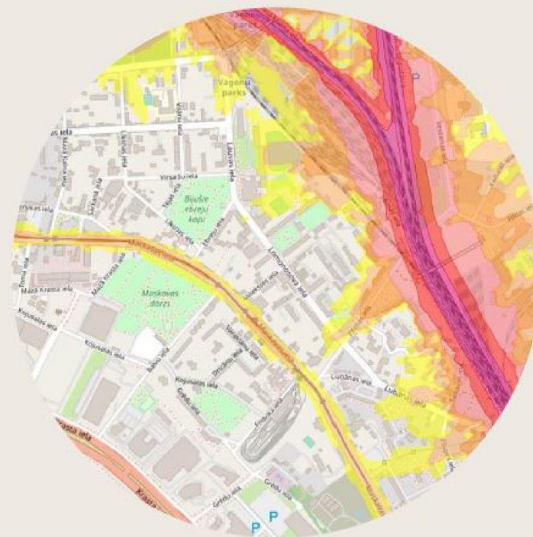
21st of March, **18:30**



noise pollution / transport



noise pollution /tram and railway



# site climate

Rīgas Domes Mājokļu un Vides departaments.

Gaisa kvalitāte. 2018.

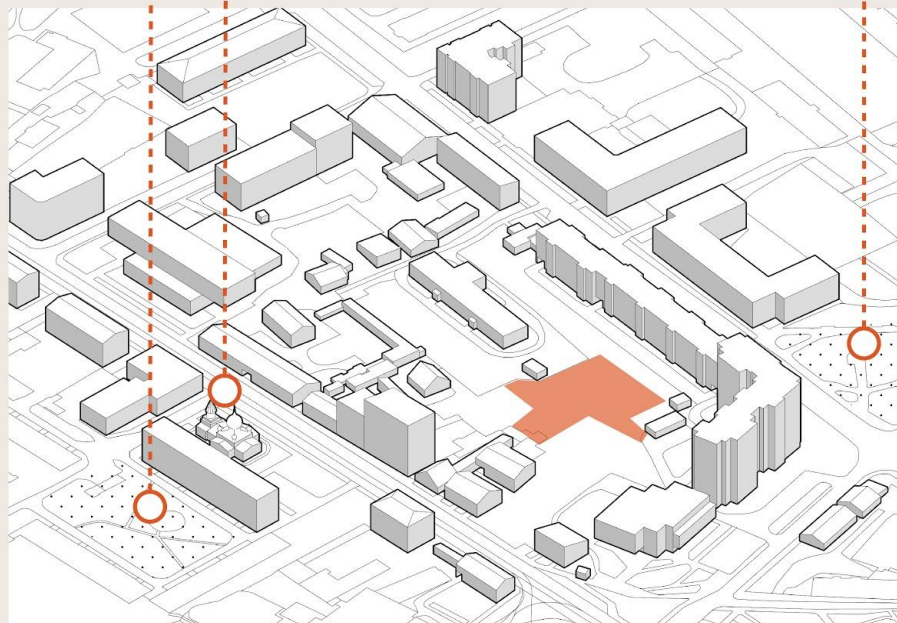
# site context

10 min Maskavas parks

Kojusalas park

Svētā erceņģeļa Mihaila pareizticīgo church

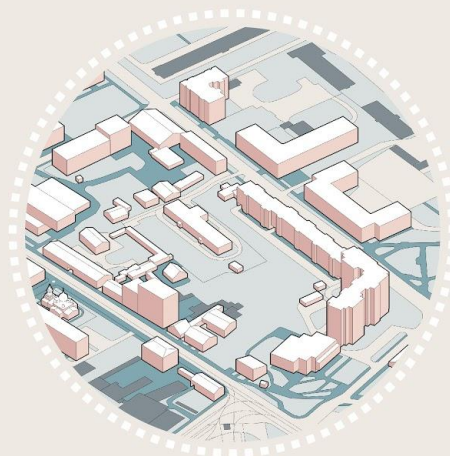
Green square





# site and transport

Green infrastructure and pedestrian roads

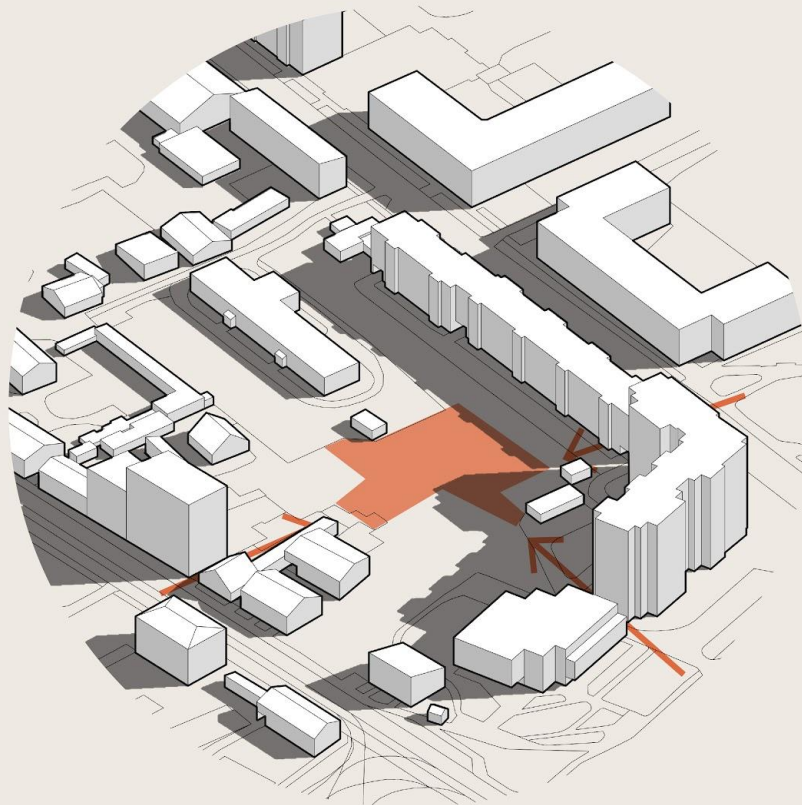


- green zones
- pedestrian roads

Public transport and car infrastructure roads

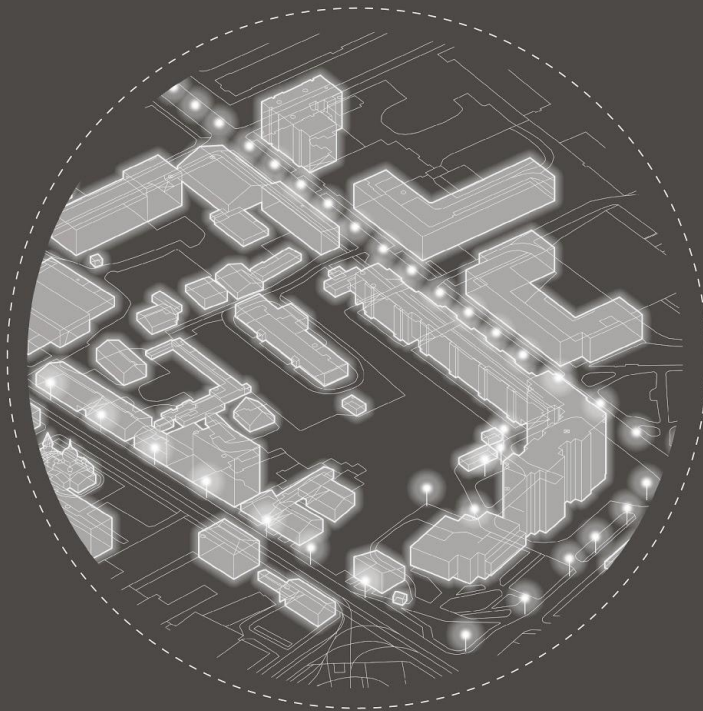


- car roads
- bus station
- tram station



entrances  
to the site

# light sources

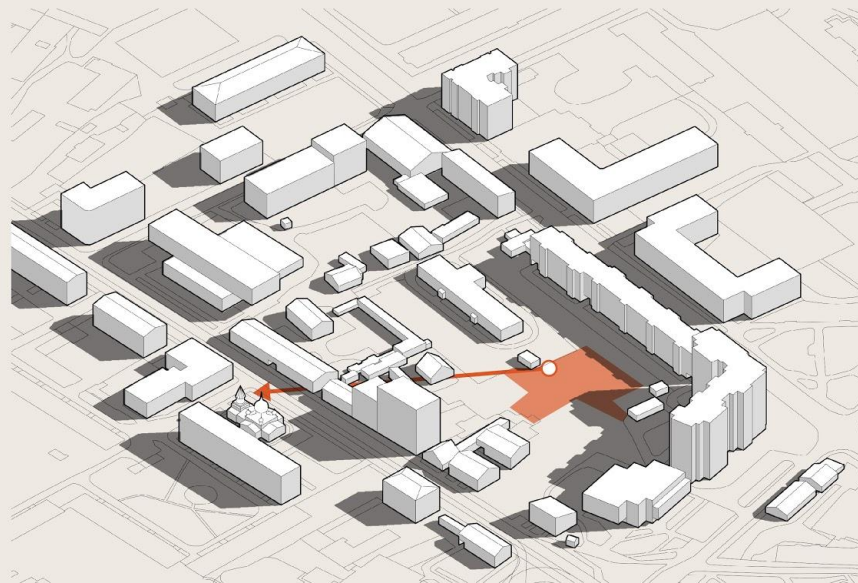


only 4 light sources  
on the site

no diversity in  
lightning sources



light sources



views on  
the site



# people profiles and their needs



**smokers**

**needs:**  
litter bins; a place to "hide"  
and smoke without  
disturbing other people



**students**

**needs:**  
recreation space;  
comfortable path on site  
without interactions and  
disturbing residents



**dog owners**

**needs:**  
dog proof trash cans; a  
dedicated place to walk with  
dogs, where dog barking will  
not disturb others



**people with reduced  
mobility**

**needs:**  
accessibility; safetiniies;  
qualitative pavement with  
abrasive surface; decent  
lightning



**passing by - between  
two public transport  
stations**

**needs:**  
qualitative pavements;  
comfortable path on site  
without interactions and  
disturbing residents



**seniors**

**needs:**  
quiet and calm spaces;  
accessibility; safetiniies

# summary of people's needs

//calm and comfortable place for senior residents //

// territory with accented relief and pleasant views //

// safe environment without drug or alcohol addicted //

// design that prevents vandalism //

// no need in huge playground //

// urban gardening structures are welcomed //

// interest and concern of residents //  
// guerilla gardening //  
// animal shelters //  
// relief and natural conditions of the site //  
// insolation //  
// noise and air pollution protection //

S

W

// opacity //  
// lack of diversity in lightning and lightning  
sources //  
// no protection from climate conditions //  
// pavements quality //  
// no accessibility //

// calm and safe place for inhabitants //  
// place to establish community //  
// environmental equality and accessibility //  
// place, which is interesting for people  
from different age groups //  
// multifunctional space //  
// **place, which forms the identity  
of the neighbourhood** //

O

T

// drug and alcohol users in the site //  
// climate discomfort //  
// vandalism //

## 02\_DESIGN TASK

# design paradigm



residents  
involvement



information stand



safe and  
preventing  
environment  
vandalism  
design

# design strategies



environmental  
equality and  
accessibility



place to  
establish  
community  
and form  
identity of the  
neighbourhood



possibility to use  
environment all  
time of the year  
and during any  
weather  
conditions

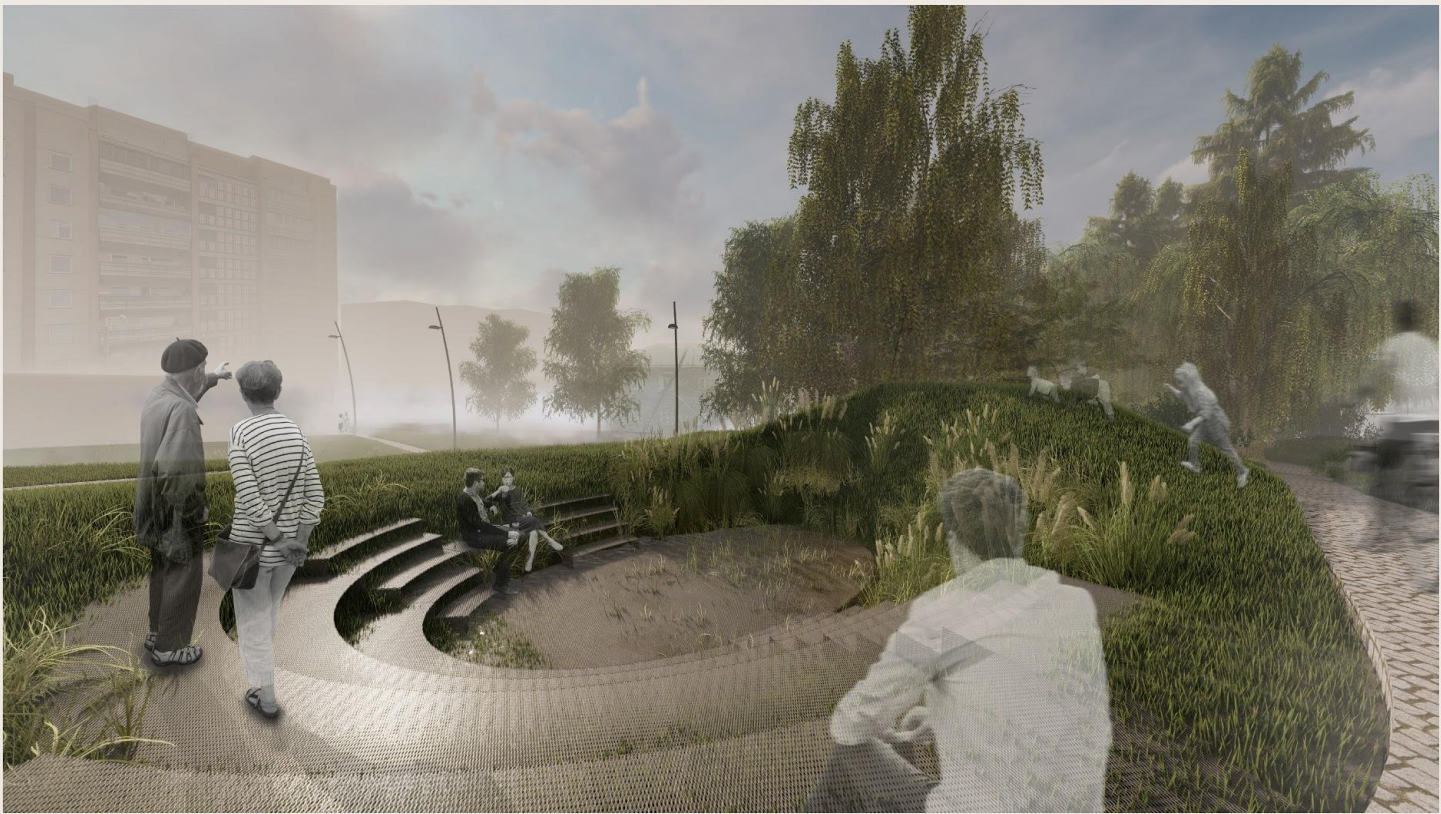


use of natural  
resources -  
relief and  
water



safe  
environment  
and vandalism  
preventing  
design

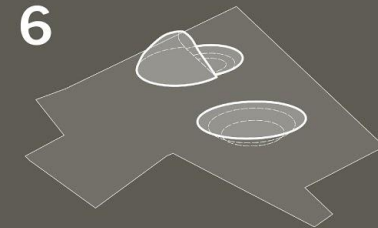
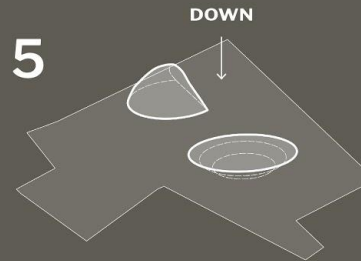
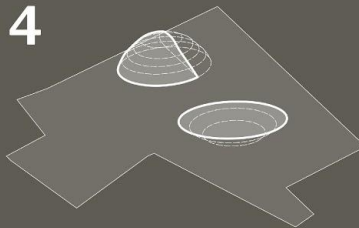
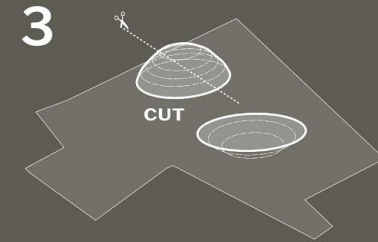
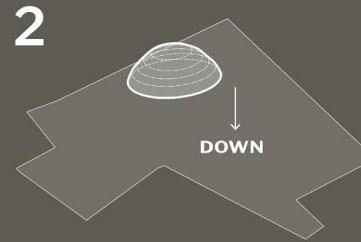
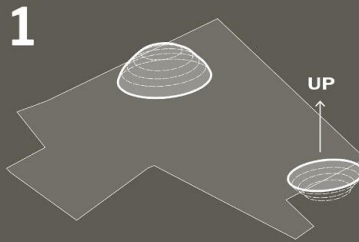




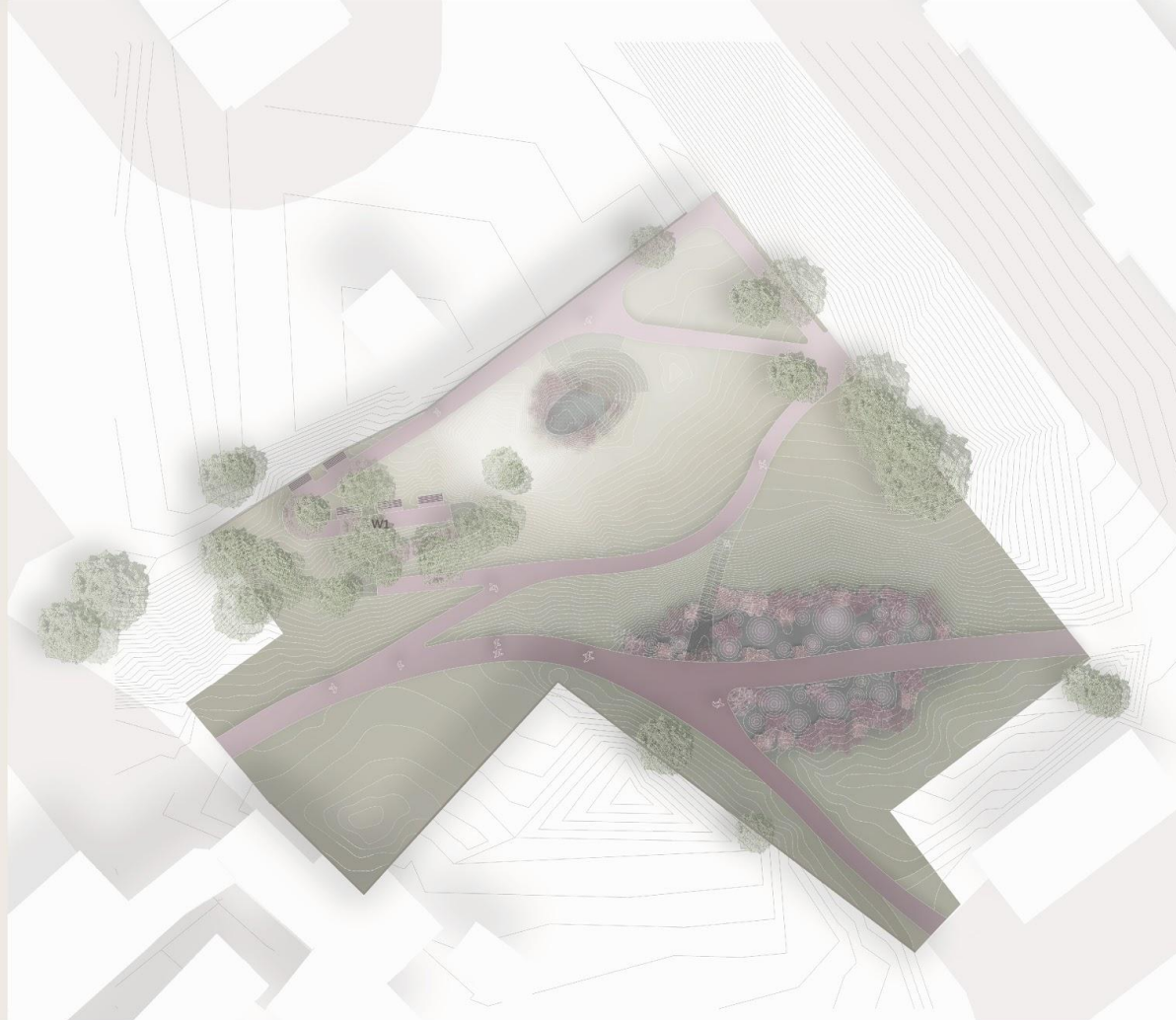




# simplified development schemes



## 03\_DESIGN SOLUTION



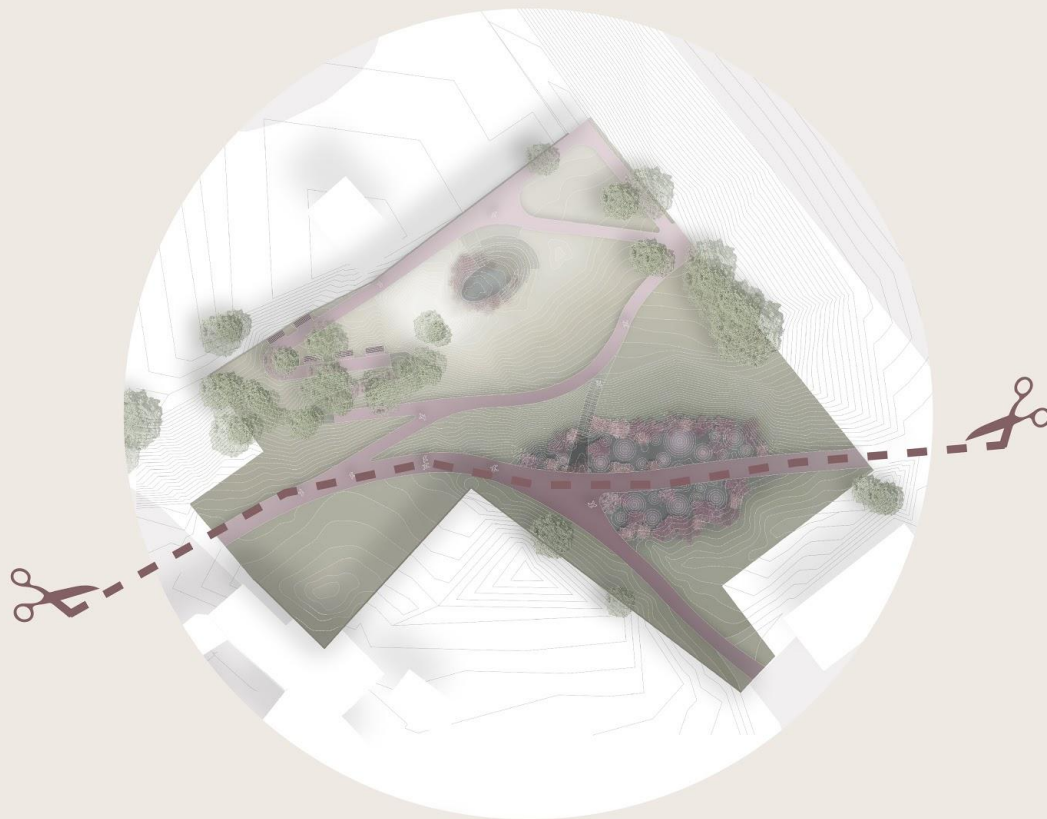
# MASTER PLAN DESIGNATIONS // ĢEN. PLĀNA APZĪMĒJUMI

- 
**greenery and vegetation**  
 \* more light greenery represents highest points in the relief
- 
**pedestrian roads**  
 \* more light roads represents highest points in the relief
- 
**pond water**  
 \* there are 2 ponds on the site
- 
**metal mesh**  
 \* they are used next to the ponds and in the ramp junctions
- 
**existing trees**  
 \* project design does not include any tree felling
- 
**new vegetation**  
 \* new vegetation is planned to be installed next to the ponds

# TASK 1:

## functional zoning

- to make functional and comfortable environment for all users
- to divide passive and active zoning in the site
- to dedicate spaces in environment for different actions

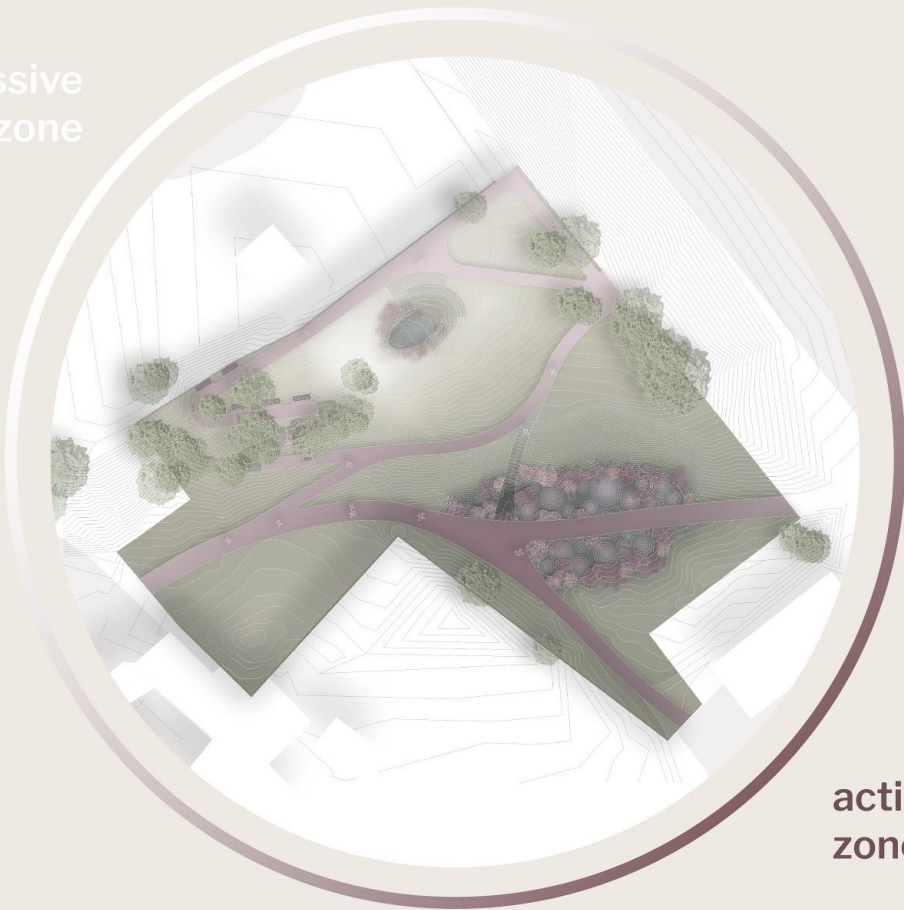


# TASK 1:

## functional zoning

- to make functional and comfortable environment for all users
- to divide passive and active zoning in the site
- to dedicate spaces in environment for different actions

passive  
zone

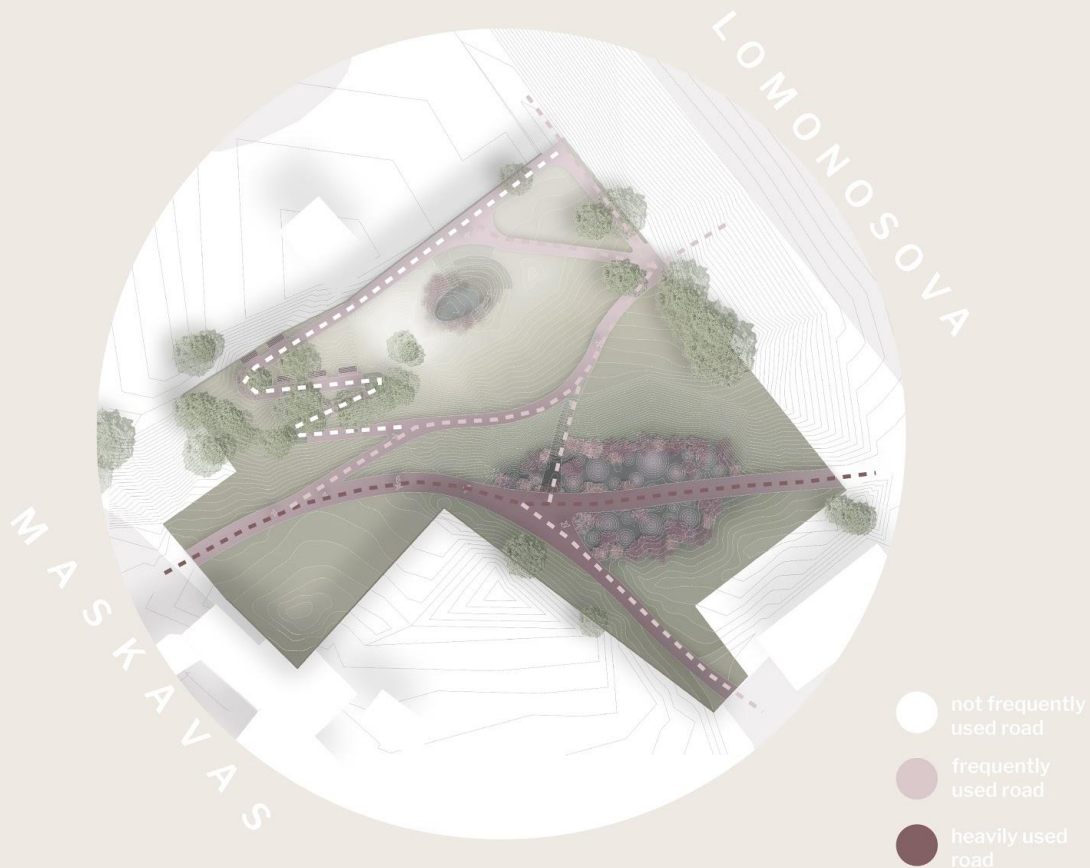


active  
zone

# TASK 1:

## functional zoning

- to make functional and comfortable environment for all users
- to divide passive and active zoning in the site
- to dedicate spaces in environment for different actions

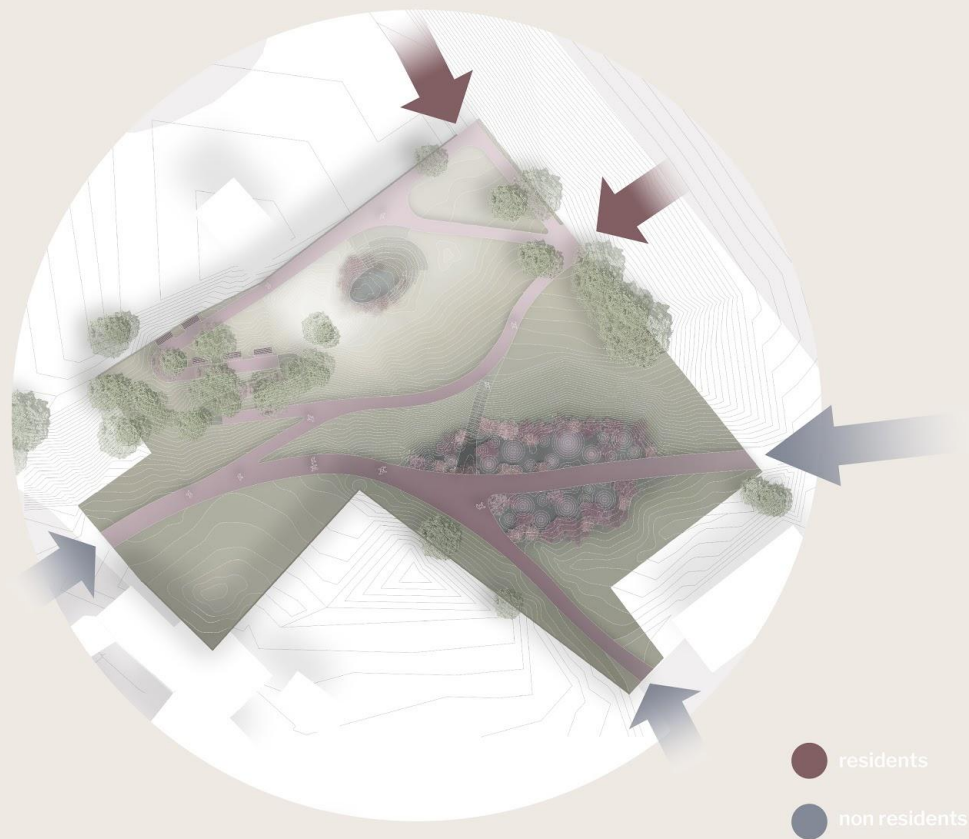




# TASK 1:

## functional zoning

- to make functional and comfortable environment for all users
- to divide passive and active zoning in the site
- to dedicate spaces in environment for different actions



# TASK 1:

## functional zoning

- to make functional and comfortable environment for all users
- to divide passive and active zoning in the site
- to dedicate spaces in environment for different actions



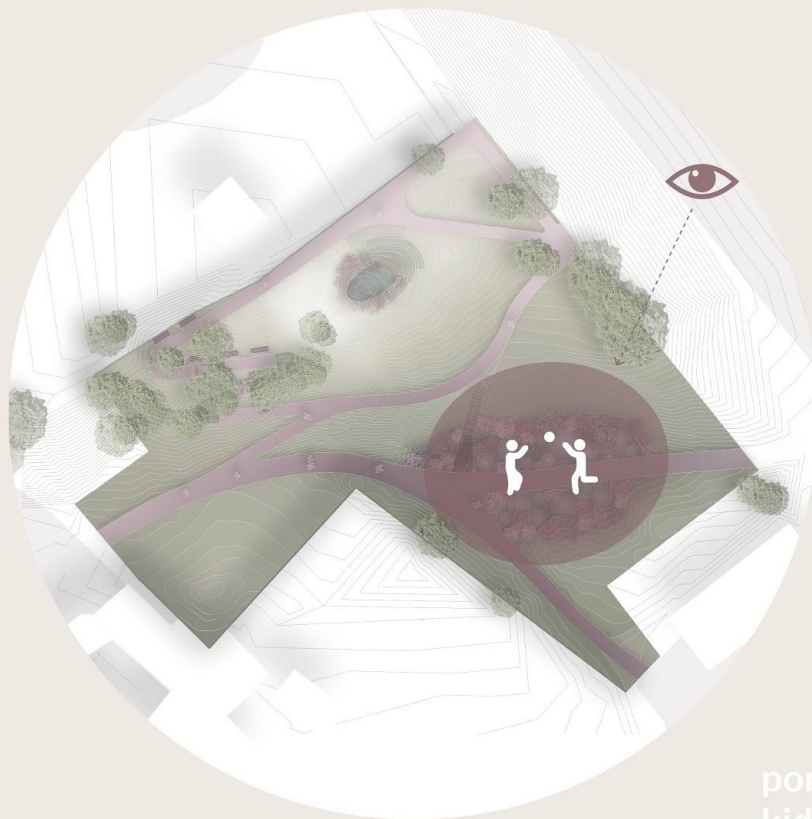
community  
zone



# TASK 1:

## functional zoning

- to make functional and comfortable environment for all users
- to divide passive and active zoning in the site
- to dedicate spaces in environment for different actions

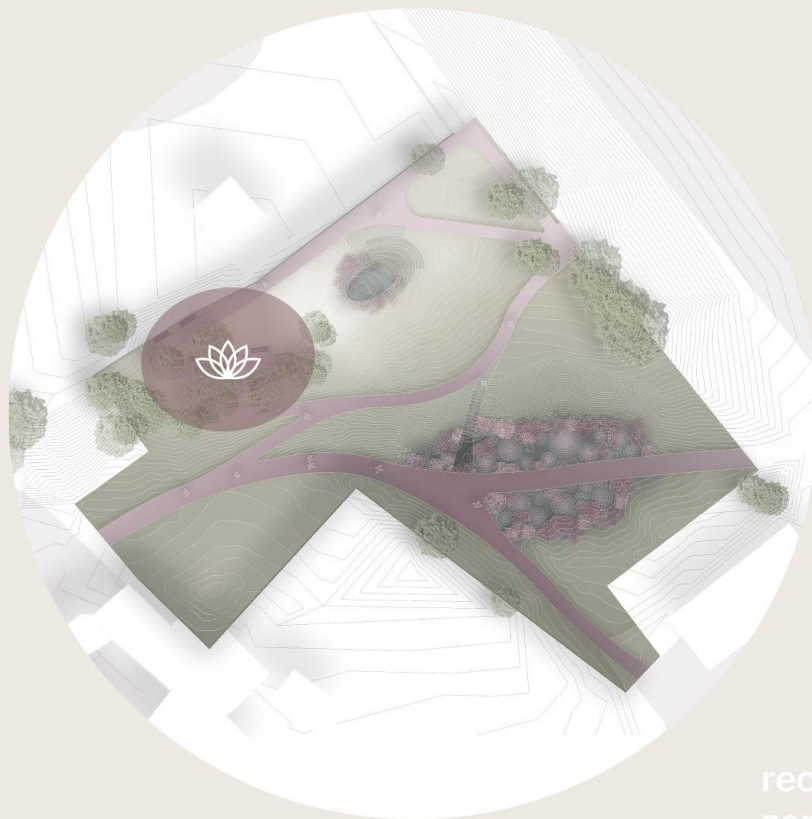


pond and  
kids zone

# TASK 1:

## functional zoning

- to make functional and comfortable environment for all users
- to divide passive and active zoning in the site
- to dedicate spaces in environment for different actions

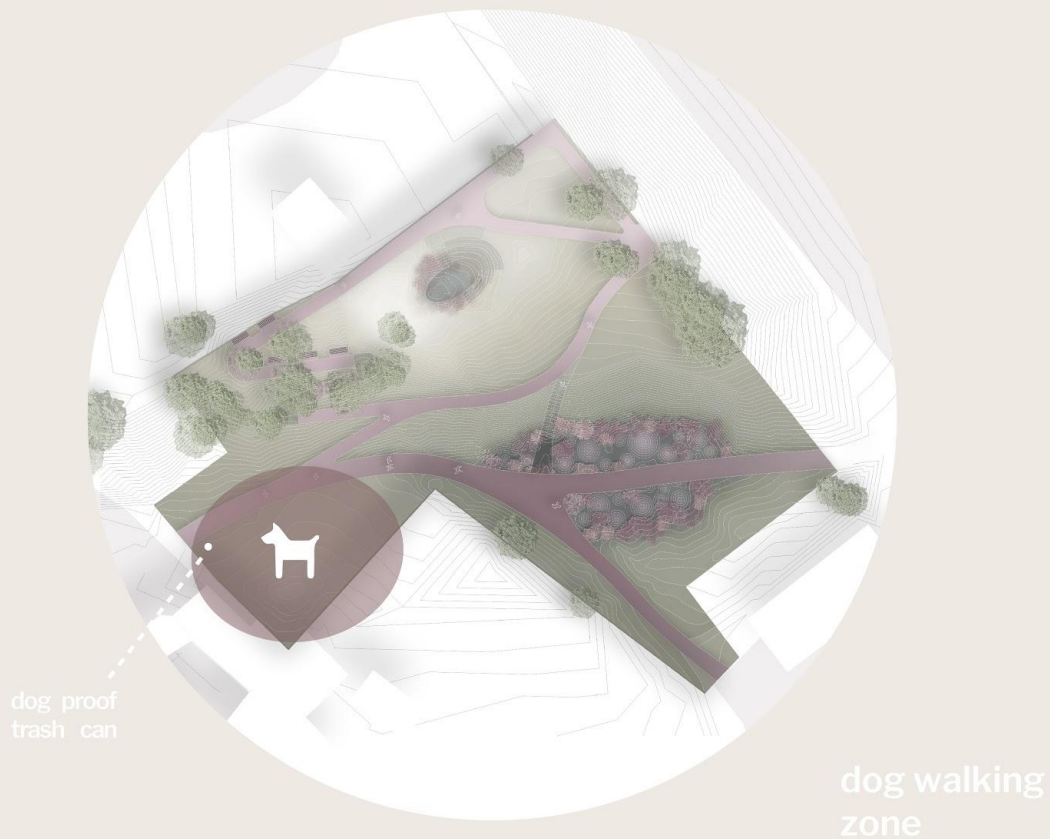


recreation  
zone

# TASK 1:

## functional zoning

- to make functional and comfortable environment for all users
- to divide passive and active zoning in the site
- to dedicate spaces in environment for different actions



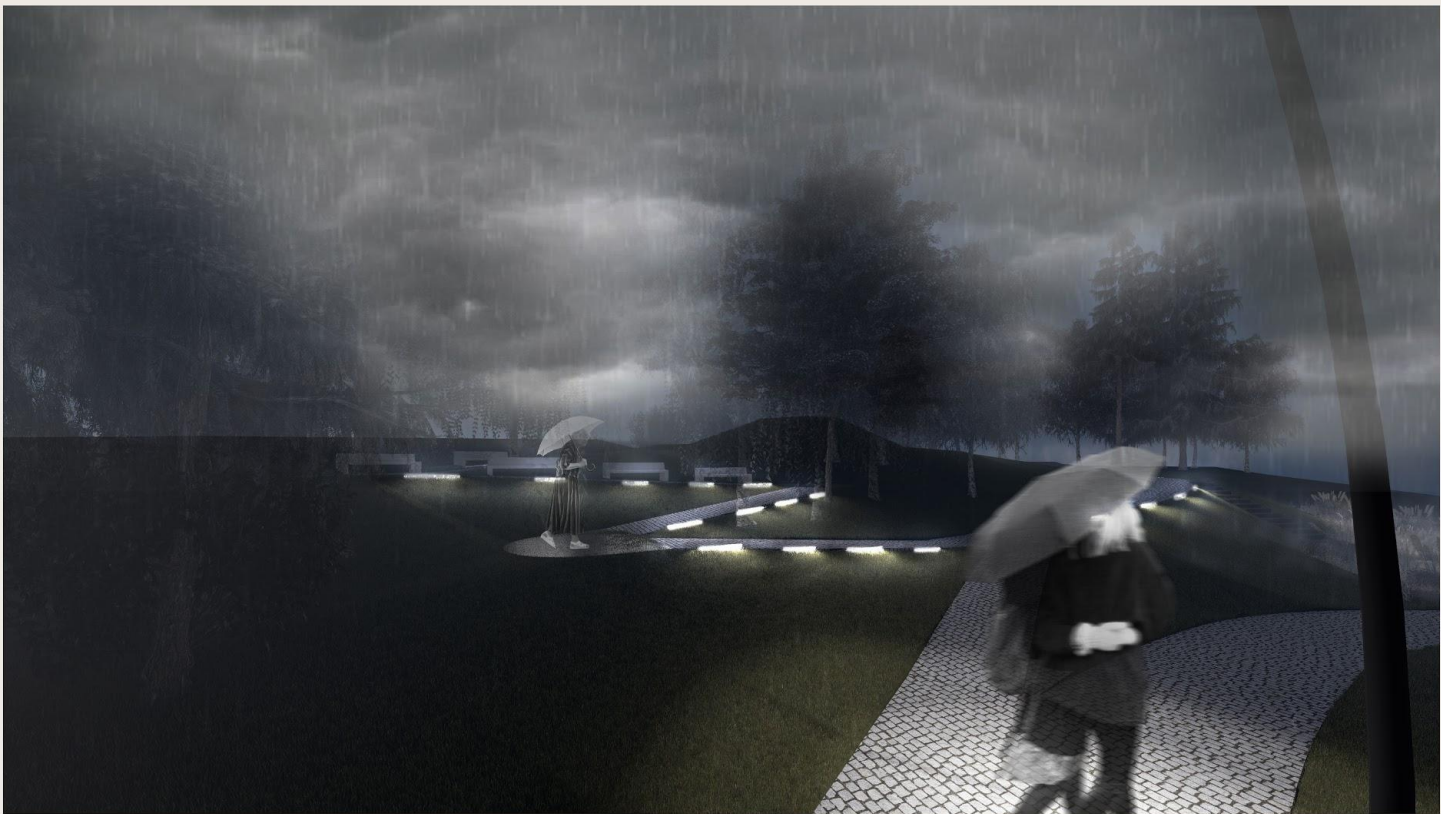
# TASK 2:

## environmental justice, equality and accessibility

- to provide comfortable and safe  
road paths for people with  
reduced mobility and seniors





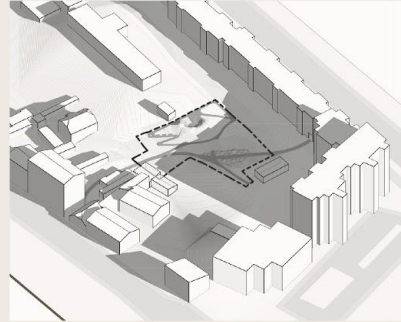


## TASK 3:

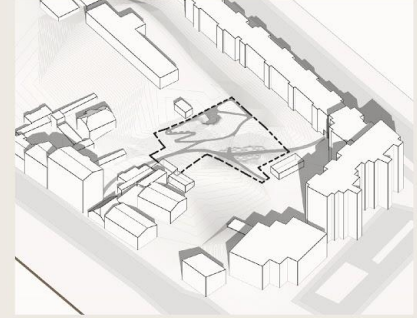
### maximum use of natural resources - relief, water, sun

- to make maximum from nature goods
- to find a synergy between environment and nature

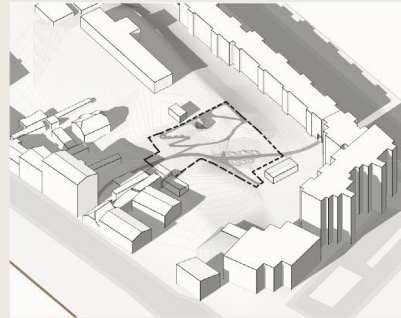
9:30



12:30



15:30



18:30



# TASK 3:

## maximum use of natural resources - relief, water, sun

- to make maximum from nature goods
- to find a synergy between environment and nature







# TASK 4:

## safe environment

- provide decent lightning structures and diversity in light sources
- to provide pavements with safe surfaces
- to provide vandalism preventing design
- to provide sustainable materials



pavement with  
a b r a s i v e  
s u r f a c e

paving stones with  
ornament dedicated  
to the adjacent build-  
ing facade

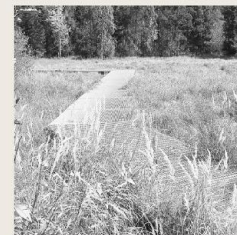
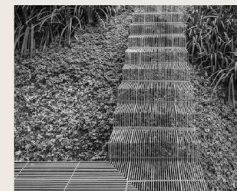


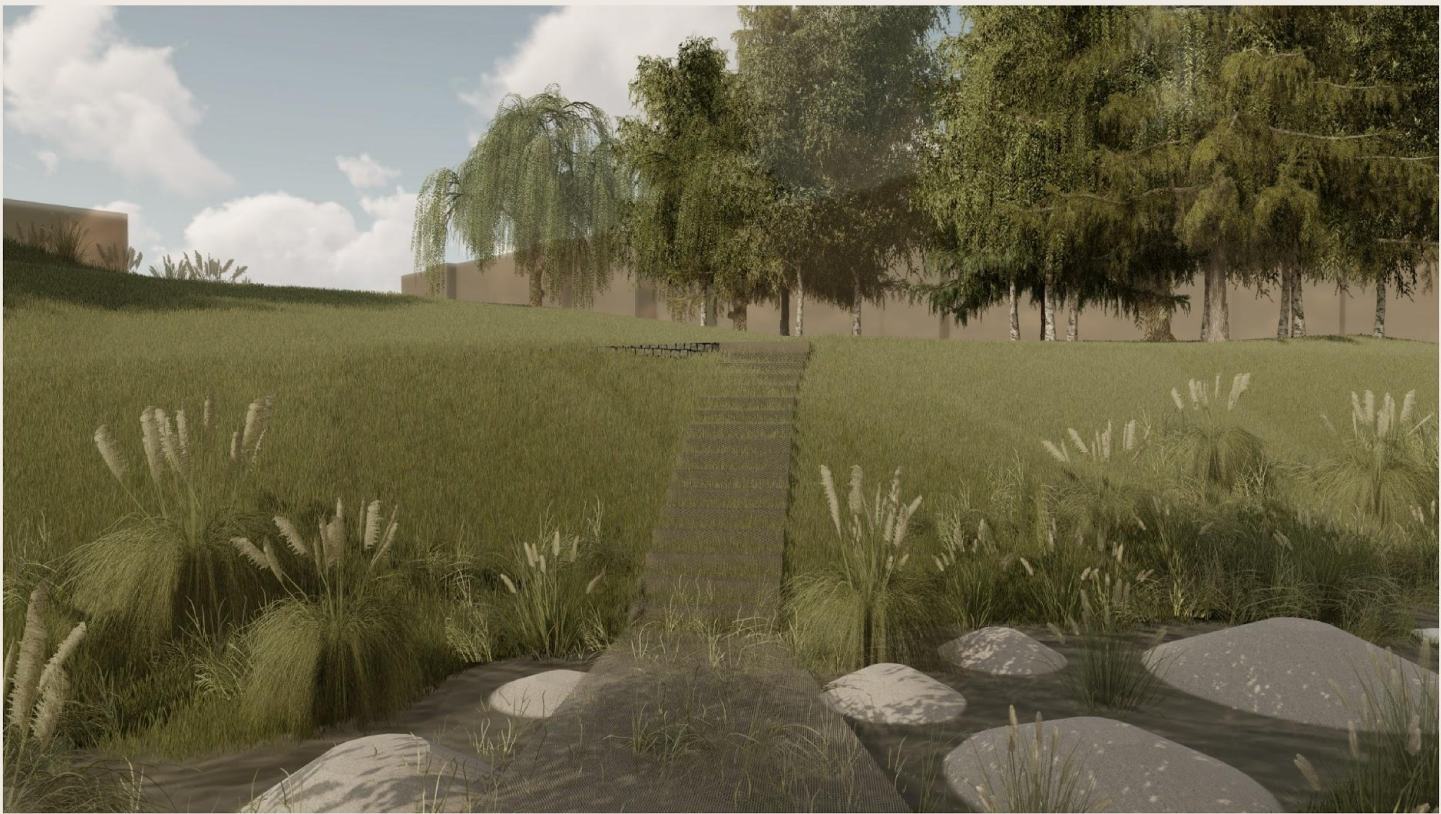
LOMONOSOVA 12  
historical monument,  
build in 1930,  
architect –  
E. Štalbergs



p a v e m e n t

transparent metal  
mesh through which  
greens make their  
way and the pond is  
v i s i b l e







# TASK 4:

## safe environment

- provide decent lightning structures and diversity in light sources
- to provide pavements with safe surfaces
- to provide vandalism preventing design
- to provide sustainable materials



pavement with  
a b r a s i v e  
s u r f a c e

paving stones with  
ornament dedicated  
to the adjacent build-  
ing facade

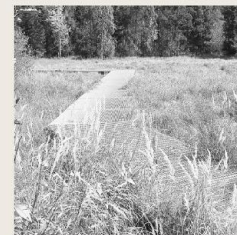
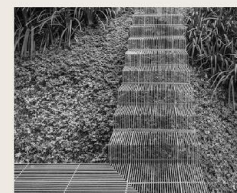


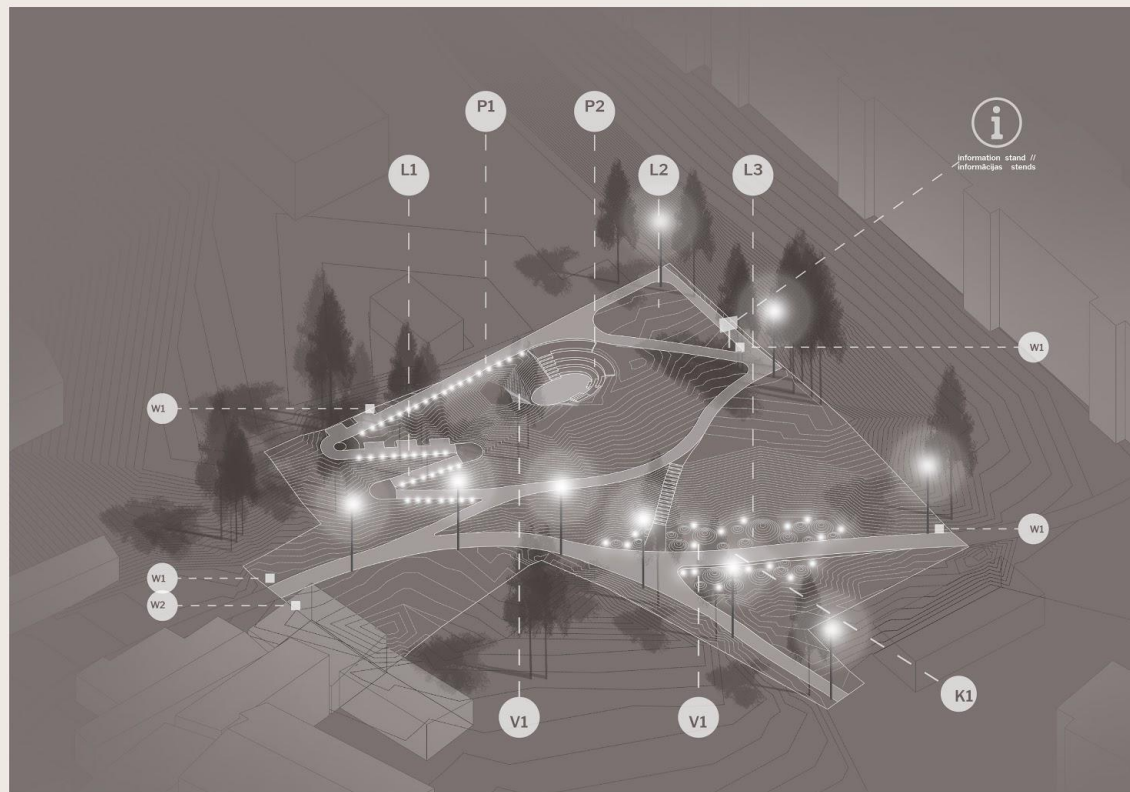
LOMONOSOVA 12  
historical monument,  
build in 1930,  
architect –  
E. Štalbergs



p a v e m e n t

transparent metal  
mesh through which  
greens make their  
way and the pond is  
v i s i b l e





# TASK 4:

## safe environment

- provide decent lightning structures and diversity in light sources
- to provide pavements with safe surfaces
- to provide vandalism preventing design
- to provide sustainable materials



small lights

small integrated  
lamps with warm  
light; not subject to  
vandalism



big lights

with blueish light to  
prevent drug using



vegetation  
lights

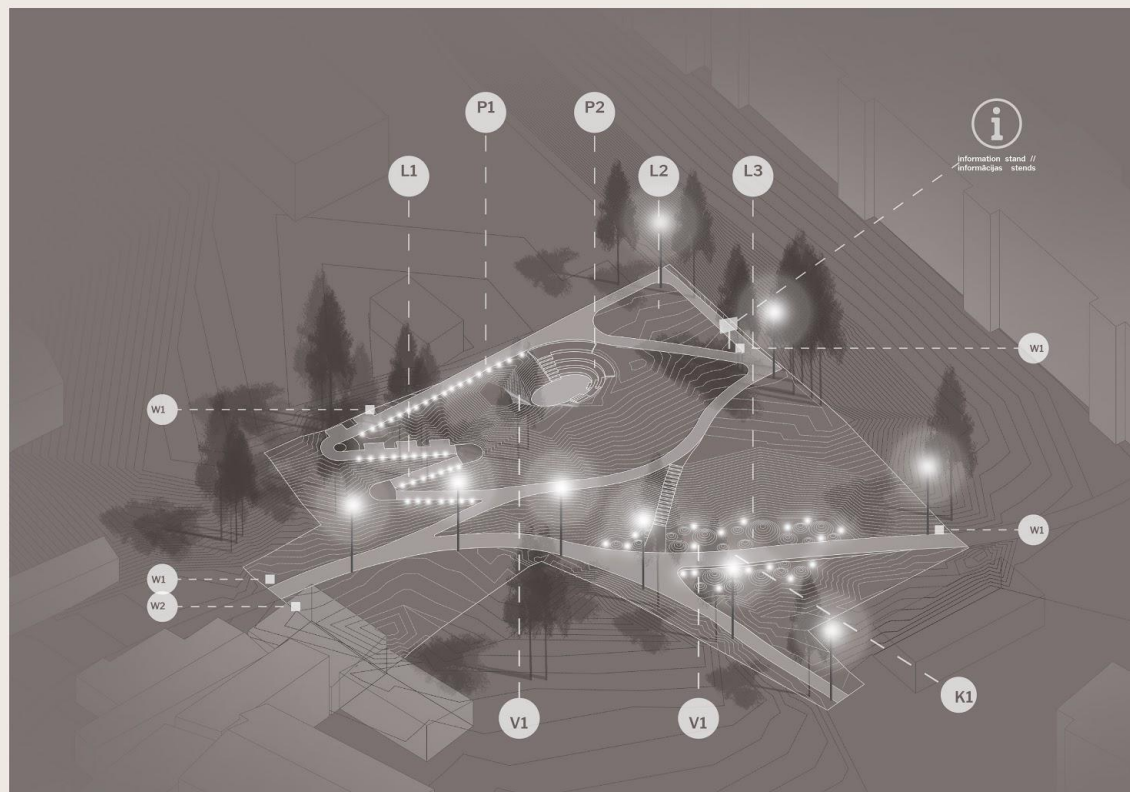


waste bins



dog trash  
proof can





# TASK 4:

## safe environment

- provide decent lightning structures and diversity in light sources
- to provide pavements with safe surfaces
- to provide vandalism preventing design
- to provide sustainable materials



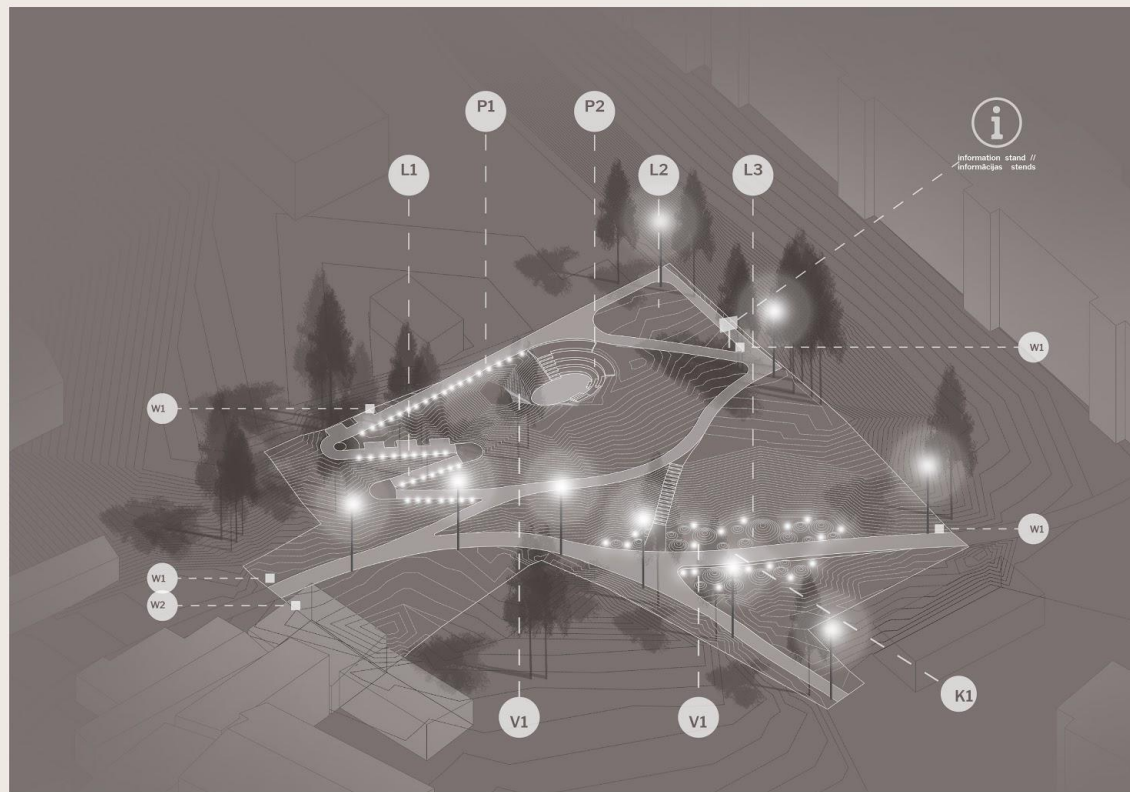
vegetation that  
blooms whole  
year

Pink Muhly Grass;  
Miscanthus  
floriculatus;  
Miscanthus sacchari-  
florus;  
Miscanthus sinensis -  
chinese silver grass



pond with  
integrated kids  
play zone

with integrated greenery  
and circle stones made  
from soft pavement



## 04\_FURTHER ACTIONS



**urban community gardening workshop**



**wall painting workshop**



**thank you!**