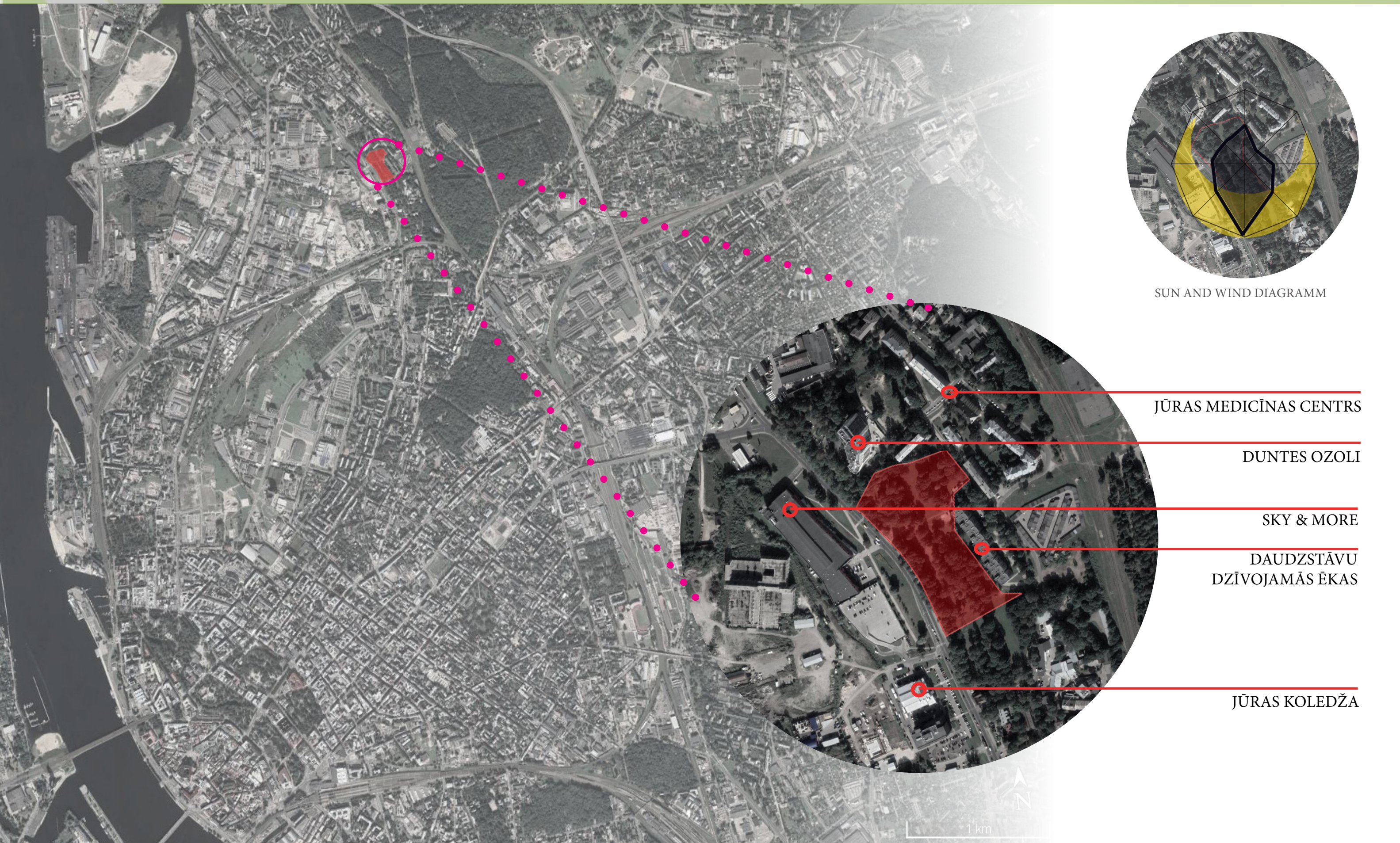




OZOLAINES PARKS

ANETE EGLE// AUSTRIS SAUKA

Location



SUN AND WIND DIAGRAMM

JŪRAS MEDICĪNAS CENTRS

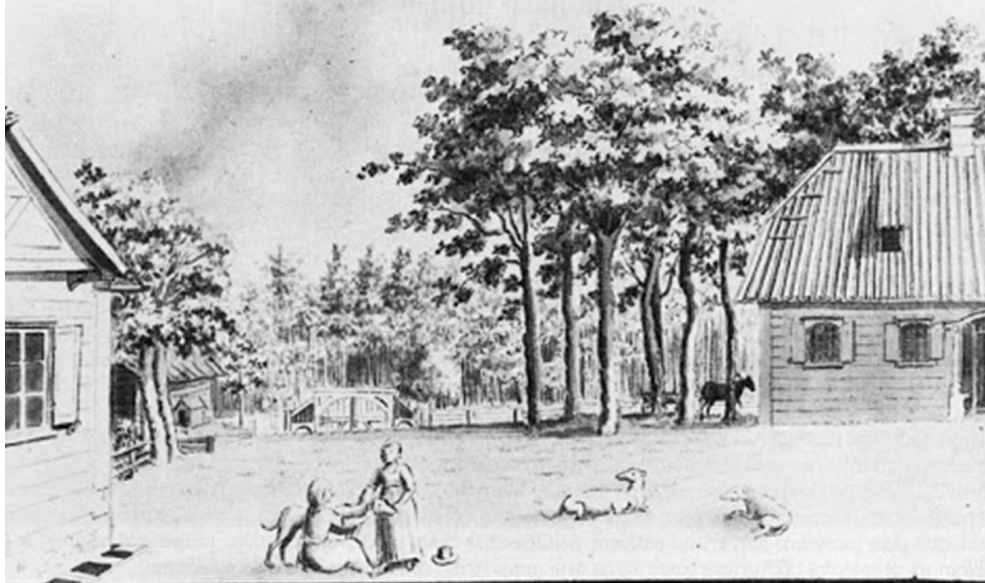
DUNTES OZOLI

SKY & MORE

DAUDZSTĀVU
DŽĪVOJAMĀS ĒKAS

JŪRAS KOLEDŽA

History



DUNTES MANOR HOUSE, 19. CENTURY B.C.



DUNTES IELA, 20ST AC 1920.-1930.

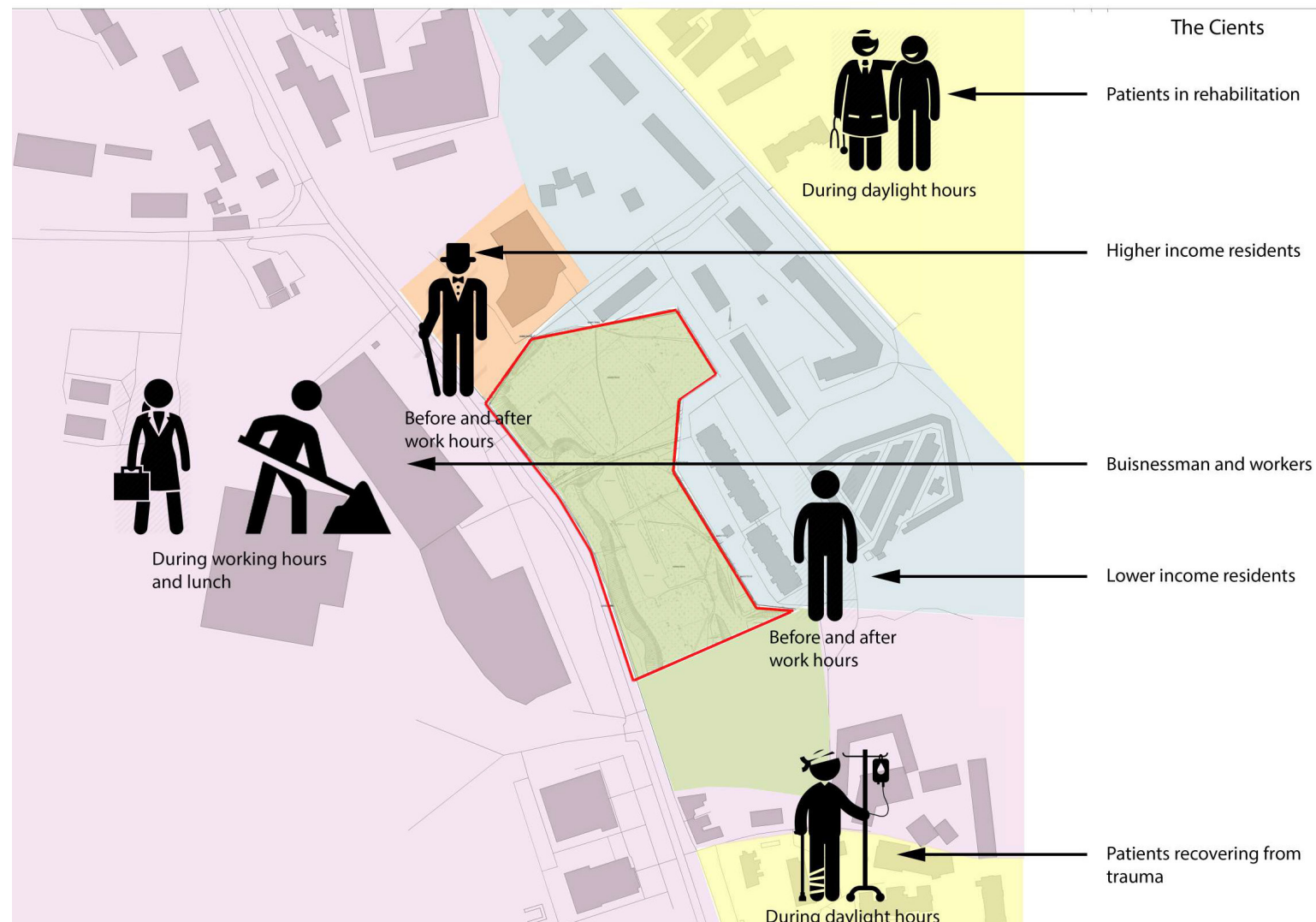


SARKANDAUGAVA CANAL, 20ST AC 1920.-1930.



DAUGAVA UNTIL MID 20ST AC

Site analysis



Strengths

- * A lot of space
- * A lot of greenery
- * Possibilities for future development

Weaknesses

- * Hard to manage
- * Does not have a strong sense of purpose
- * Funds are very limited for the site

Opportunities

- * Can put in a lot of facilities
- * Possibilities for future expansion

Threats

- * Lack of long-term commitment from residents
- * Possibility of vandalism
- * Do to scale some parts of the site might be left out

Inhabitants opinions

**Inhabitants envision
Ozolaines park as a simple,
beautiful park with
amenities for
socialisation and
active lifestyle.**

PLACE FOR CELEBRATIONS SOCIALISATION

PLAYGROUND

FOOTBALL

OUTDOOR GYM

VOLLEYBALL AND BASKETBALL

DOG PARK

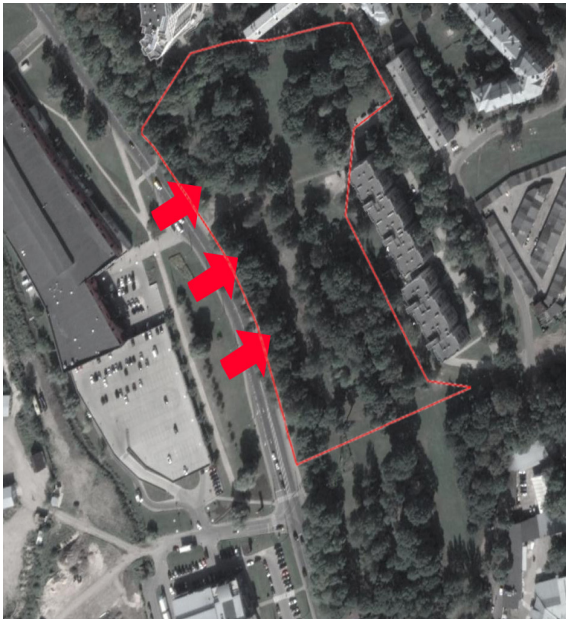
AMONG THE HIGHLIGHTED IN PLAN,
THE INHABITANTS ALSO EXPRESSED
THE NEED FOR :

BINS FOR PET WASTE

MORE BUSHES AMONG THE TREES

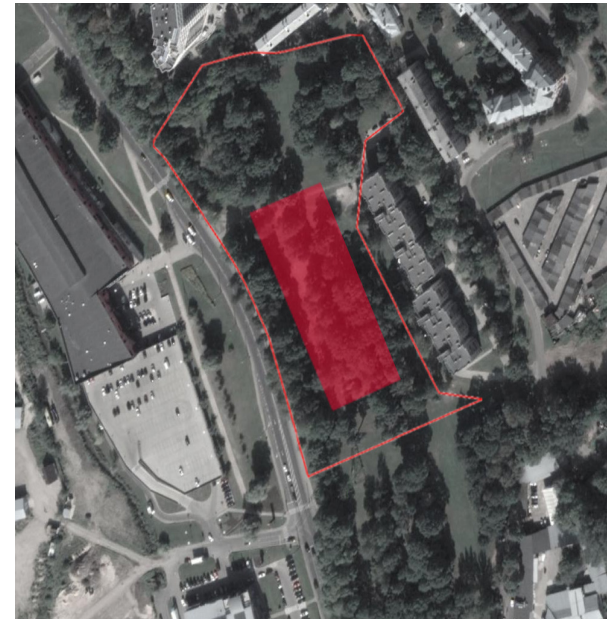
PROPER PATHS

Design task



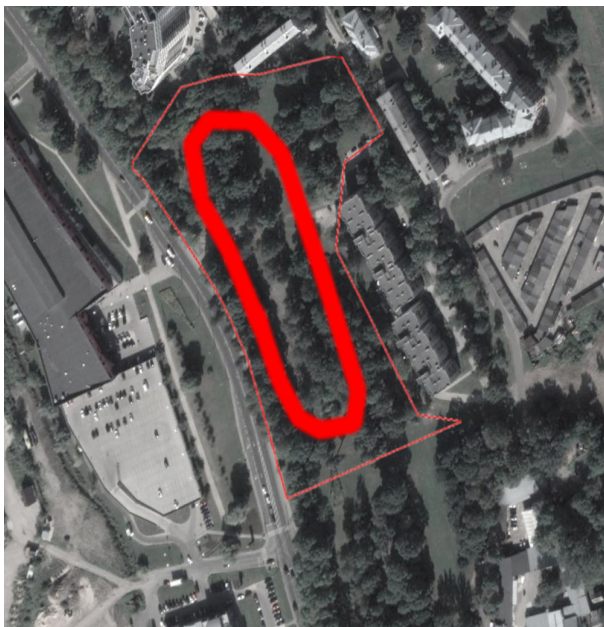
1

CREATE A CONNECTION
TO DUNTES STREET



2

TRANSFORM THE NEGLECTED
BASKETBALL COURT
INTO A PLACE FOR EVERYBODY



3

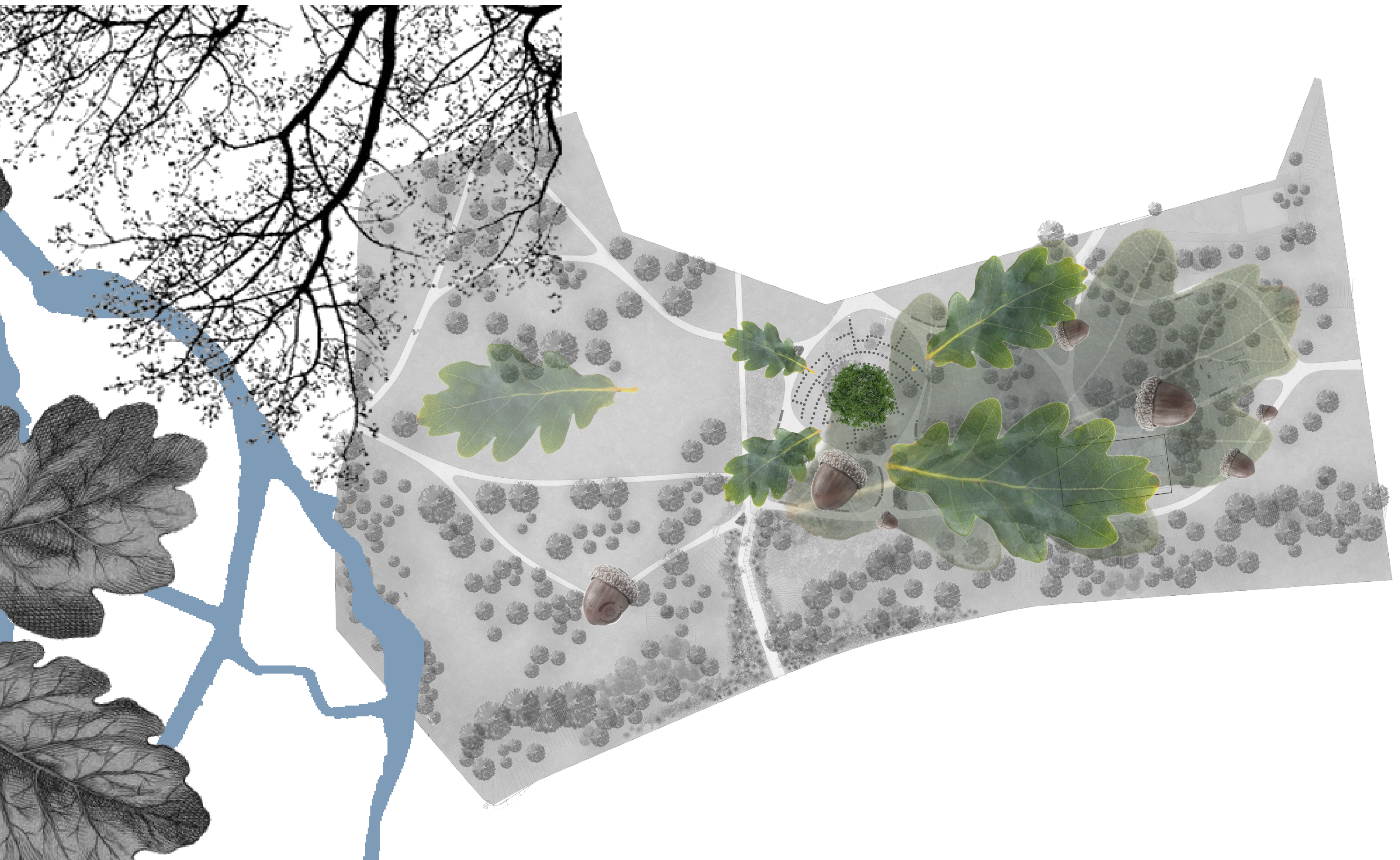
RESTORE THE PATHWAYS AND
CREATE A WALKING ROUTE



4

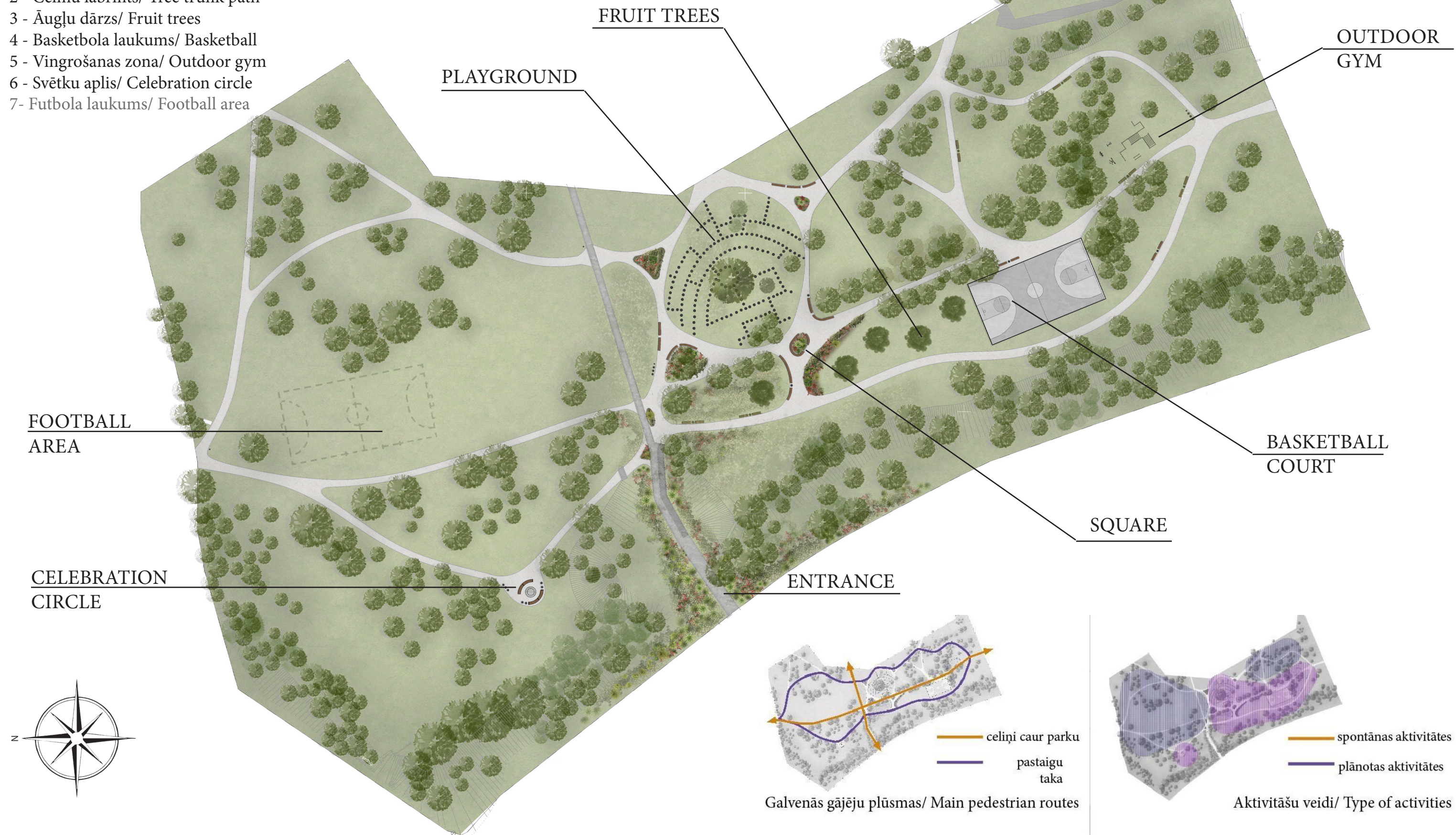
INTRODUCE NEW AMENITY
ELEMENTS

Inspiration

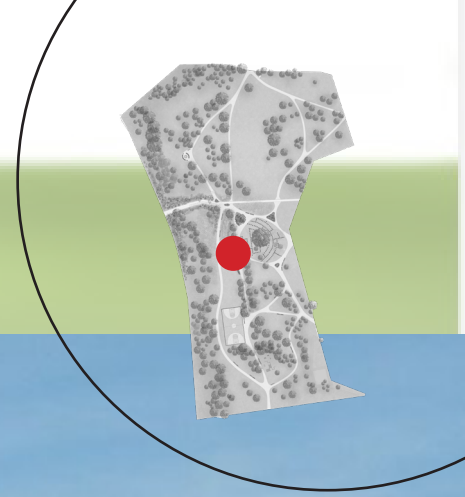


Masterplan

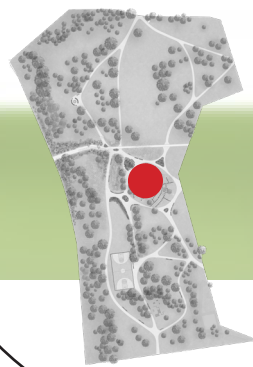
- 1 - Skvērs/ Square
- 2 - Celmu labrints/ Tree trunk path
- 3 - Āugļu dārzs/ Fruit trees
- 4 - Basketbola laukums/ Basketball
- 5 - Vingrošanas zona/ Outdoor gym
- 6 - Svētku aplis/ Celebration circle
- 7- Futbola laukums/ Football area



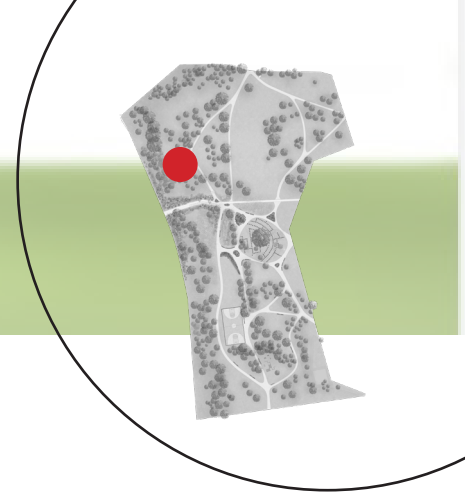
Ozolaines park



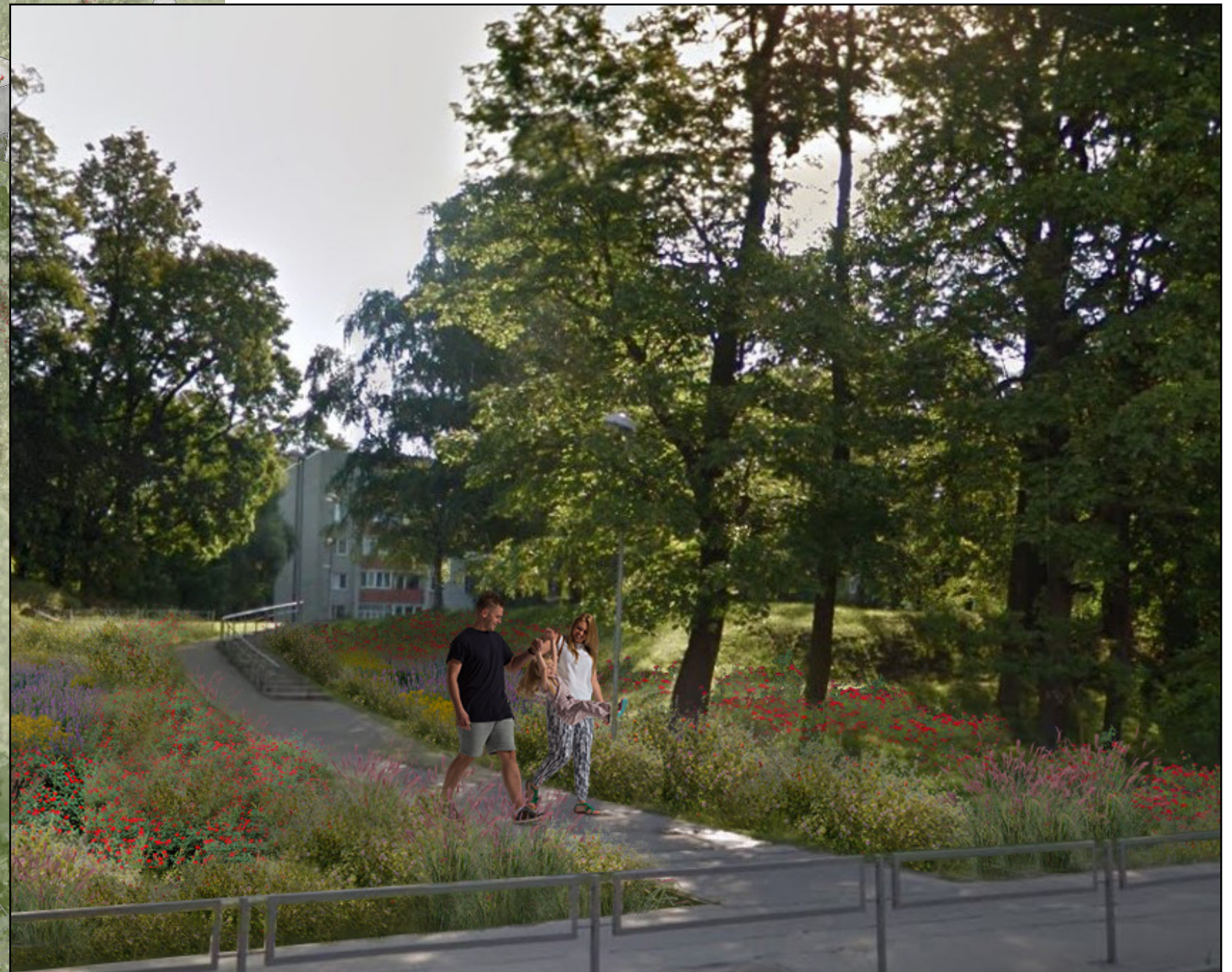
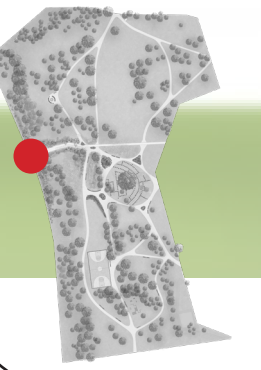
Tree trunk path



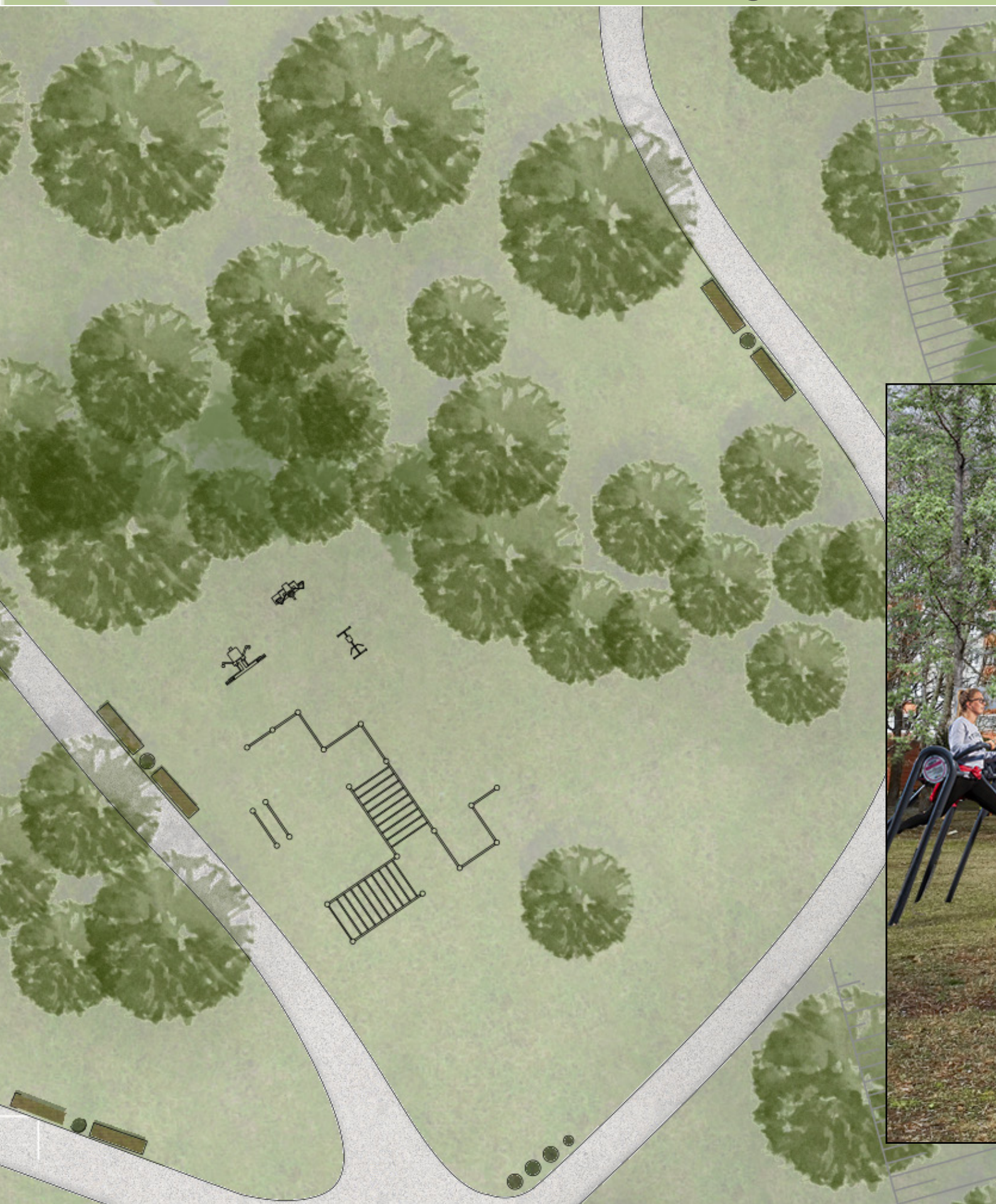
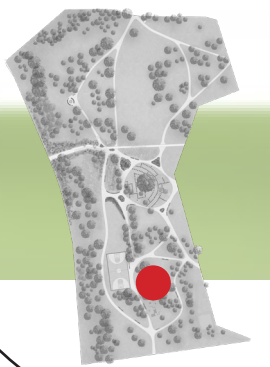
Fire circle



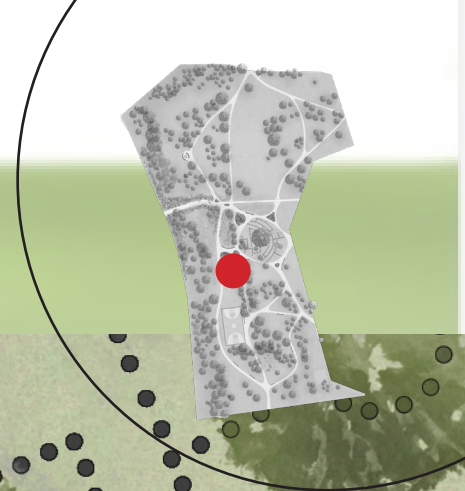
Entrance



Outdoor gym



Fruit trees



Surfaces

Gravel



Flower beds



Amenities / bins



D= 400-550 mm
H=200-300 mm
From "Rīgas dārzi un parki"



Pinewood seating with steal
supporting frame
H= 500 mm
W= 500 mm

ANIMAL WASTE BIN



BIN



RECYCLE BINS





Budget

Material	Amount m2/ units	Price per m2/ unit (EUR)	Total cost (EUR)
Gravel	2812	60	168 720
Flower bed	1371	100	137 100
Equipment	Units	Price per unit	
Benches	30	150	4500
Bins	15	110	1650
Dog bins	8	120	960
Tree trunks	Not appl	Not applicable	Not applicable
Exercise machines	5	1600	8000
Total cost			320 930

Note: tree trunk can be acquired by the client "Rigas mezi un parki" from their own stock with no extra cost