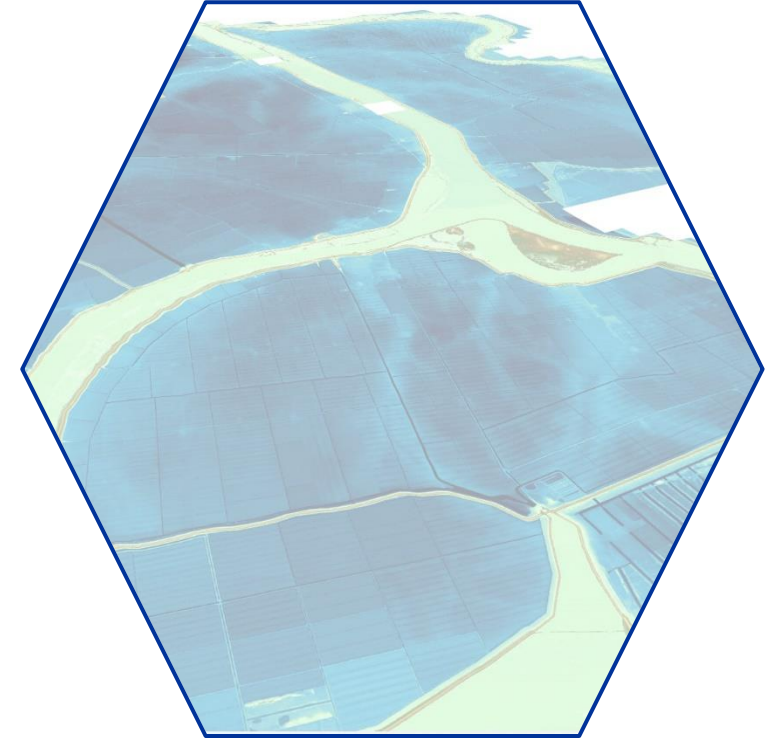
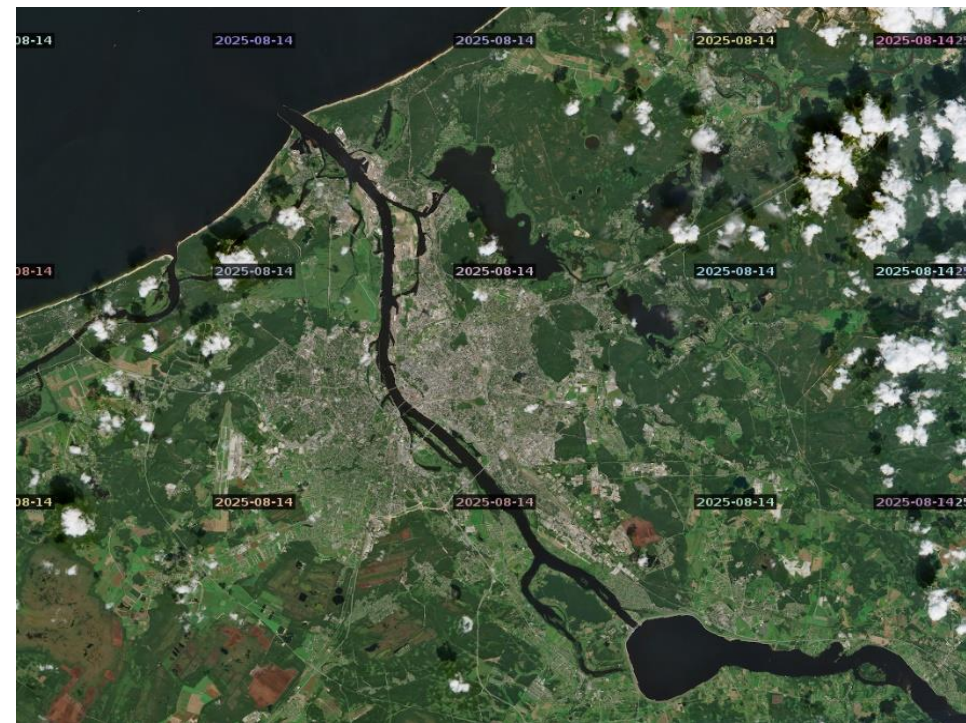


The Interreg Europe SATSDIFACTION Project



satsdifaction@regione.veneto.it

Labrīt un paldies par viesmīlību!



SAT.SDI.F.A.CT.ION

Satellite data and Spatial Data Infrastructures for an evidence-based regional governance



What is the common regional development issue addressed by the project?

The integration of satellite data into local and regional spatial data infrastructures (SDI) is of strategic importance and has great potential to support governance and decision-making at subnational level.

However, due to the lack of competences - at organisational and individual level, as well as low awareness among political decision makers, the uptake of existing satellite data and services is challenging, and their integration in added-value services for regional and local governments is far from optimal.



SOLUTION

Promoting the exchange and transfer of experiences related to the use of Satellite Data in local and regional Spatial Data Infrastructures as a means to improve the performance of regional policy instruments, eventually leading to a better, evidence-based governance.

POLICY OBJECTIVE
A better cooperation governance

Why is this topic so important to us?

We are trying to find the best synergy between satellite data and space data infrastructures because we think that:

all data is geographic data

and the improvement of our policies is necessary because:

when information satisfies needs, it becomes knowledge.

Facts and figures

- ❑ The idea was first incepted and the partners were found within **the Network of European Regions Using Space Technologies**, associated partner of the project
- ❑ **4 years duration** (starting March 2023)
- ❑ **10 international events** (including 7 Learning Deep Dives, *i.e. site visits, observation of practices, masterclasses and workshops followed by structured feedback sessions*)
- ❑ **13 Regional Stakeholder Group meetings** planned organized **by each partner**
- ❑ **€1,745,963 total budget**



Partners

Veneto Region *

IT

NEREUS (Advisory partner)

BE

Podkarpackie Region *

PL

Azores Region *

PT

Sviluppo Basilicata (Basilicata) *

IT

ISSeP (Wallonia Region) *

BE

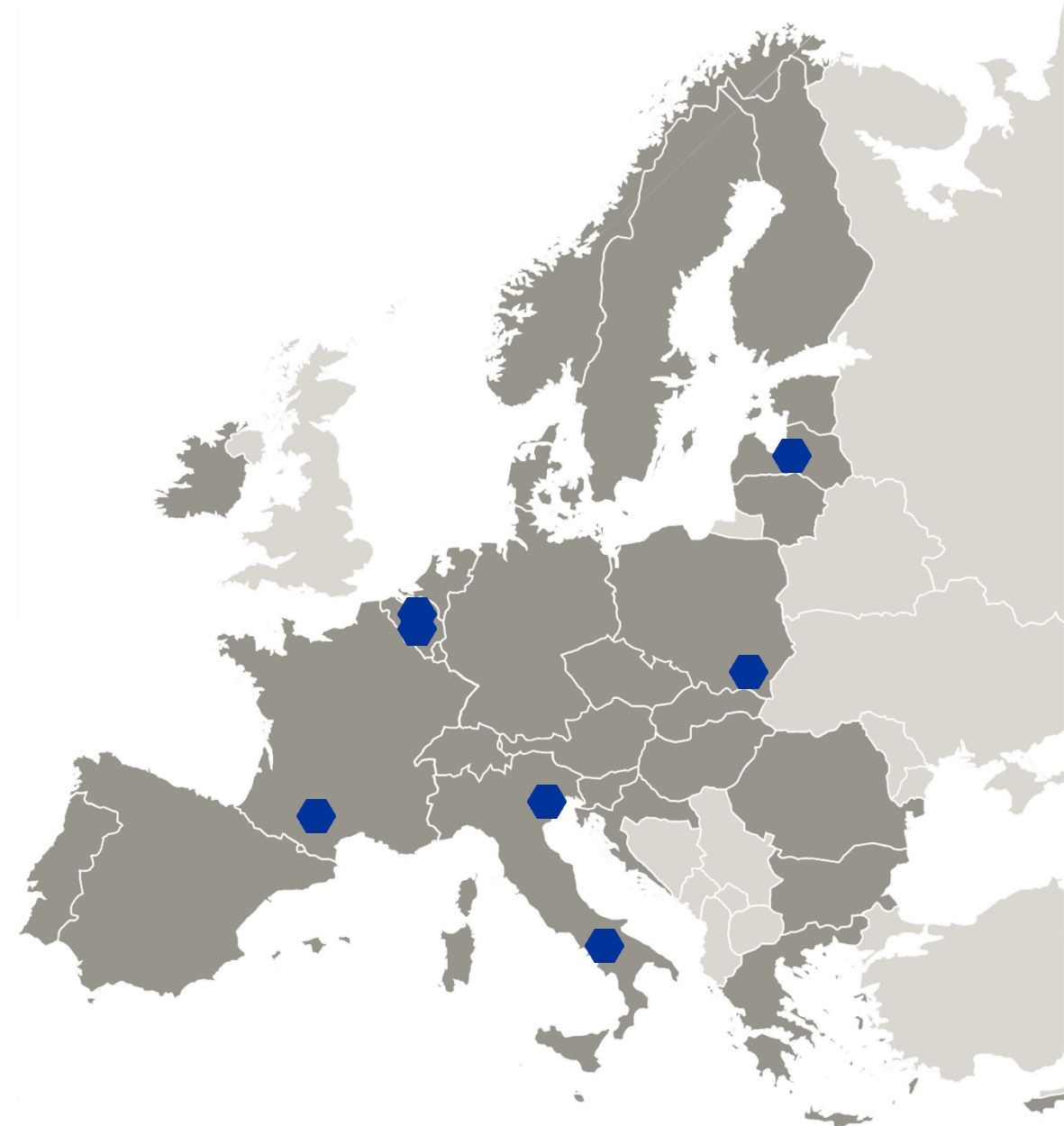
Riga Municipality

LV

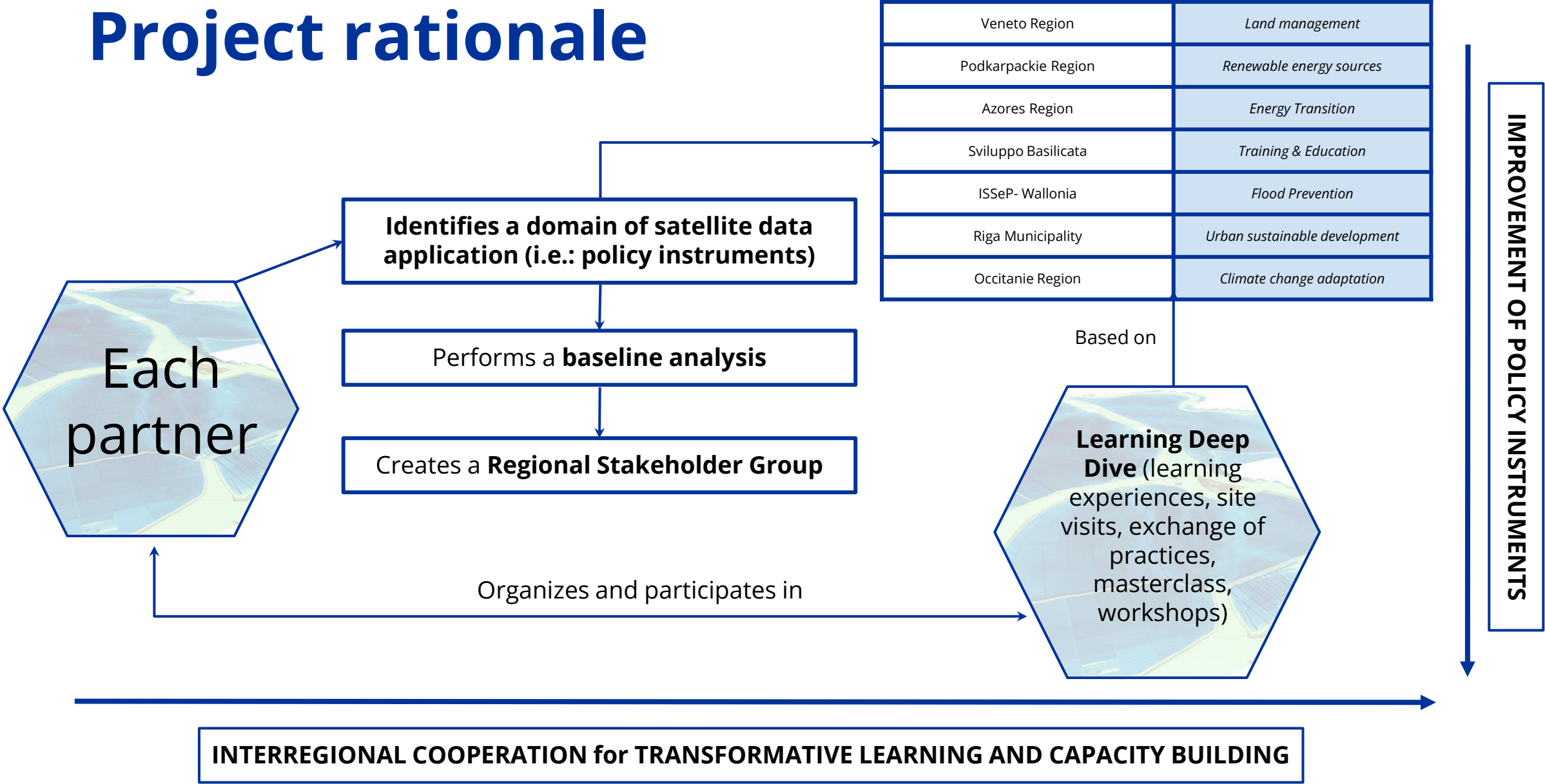
Occitanie Region *

FR

* = NEREUS members



Project rationale



Main conceptual elements and their KPIs

REGIONAL STAKEHOLDERS GROUPS

Regional stakeholder groups (RSGs) are a group of local and regional actors, facilitated by experienced coordinators, with a mandate to analyse, assess, plan and develop local innovation in the chosen regional policy instruments through participatory and integrated work on the Improvement Roadmaps.

N° of organisations cooperating across borders: more than 60 (partners + stakeholders)

LEARNING DEEP DIVES

Learning experiences as methods for learning from each other. The LDDs foresees preparatory work, site visits and observation of practice, masterclasses and workshops followed by structured feedback sessions.

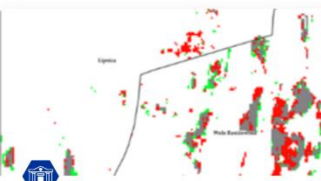
N° of interregional policy learning events organised: 10 (8 LDD + Bootcamp + final event)

GOOD PRACTICES

A good practice is defined as an initiative related to regional development policies which has proved to be successful in a region and which is of potential interest to other regions.

N° of good practices identified: 21 (3 per each partner)

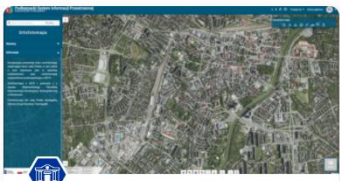
Good practices identified so far 1/2



Implementation of satellite data on changes in the agrarian structure/program of agricultural works.

Using satellite data in analyses on programming and implementation of agricultural works to optimize the results based on current spatial information.

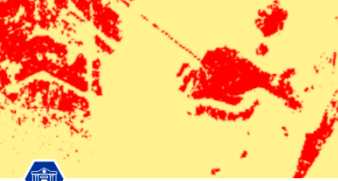
28 Feb 2024 | By project SATSDIFACTION
Expert approved



Podkarpackie Spatial Information System (PSIS)

The creation of the PSIS - regional, open, digital platform integrating spatial information resources - as a key element in supporting public decision-making.


28 Feb 2024 | By project SATSDIFACTION
Expert approved



Mapping and monitoring Urban Environment through Sentinel-1 SAR data

By using Sentinel-1 SAR data it's possible to monitor the evolution of urban areas: a reliable, useful and cost-efficient support for regional planning.

31 Aug 2023 | By project SATSDIFACTION
Expert approved



Hydrometry and Flood Information in Wallonia: Real-Time Geodata for Crisis Management

The Hydrometry and Infocruce portal of the Walloon Region combined with EO data, contributes to an improved risk management in the region.


11 Aug 2025 | By project SATSDIFACTION



National Satellite Information System (NSIS) in Poland

NSIS is the interoperable system for receiving, processing and sharing satellite data to provide monitoring services, information products and analytical tools

28 Feb 2024 | By project SATSDIFACTION



Land deformation monitoring with integrated geomatic technique in the Veneto Region

Integrated geomatic technique combining levelling lines, InSAR data and GNSS surveys for monitoring land subsidence in Veneto Region

31 Aug 2023 | By project SATSDIFACTION
Expert approved

After the end of every LDD, each partner, with the help and feedback from the rest of the consortium, identifies 3 good practices from its region to be uploaded on our project website,
<https://www.interregeurope.eu/satsdifaction/good-practices>

Good practices identified so far 2/2

and if approved, on the Interreg europe policy learning platform,

<https://www.interregeurope.eu/policy-learning-platform>



Integration of Satellite data in regional and local SDIs as reference for territorial planning

The integration of satellite data in regional Spatial Data Infrastructures is a key factor to help policy makers deliver better, evidence-based policies

31 Aug 2023 | By project SATSDIFACTION



Enhanced Solar Energy Management in the Azores Using Automated Satellite Detection

With VHR and HR satellite imagery, Azores authorities can auto-map, plan, monitor, and optimize solar panel installations, boosting renewable energy management.

09 Aug 2024 | By project SATSDIFACTION



Spatial Data Infrastructure of the Azores (IDE.A)

IDE.A is the Azores' SDI, offering data, services, metadata, tech, and tools. Its interoperability allows exploration, access, and sharing of geographic info.

08 Aug 2024 | By project SATSDIFACTION



Using satellite data to enhance forest carbon accounts' resolution, boosting policy uptake.

Remote sensing monitors ecosystems to support decisions and policies. São Miguel Island tests carbon sequestration, benefiting public and private stakeholders.

08 Aug 2024 | By project SATSDIFACTION



Plateforme OPENIG (Occitanie Pyrénées en Intelligence Géomatique)

OPENIG is a regional platform in Occitanie that facilitates the sharing, management, and visualization of geographic data for public and private stakeholders.

19 Feb 2025 | By project SATSDIFACTION



Coastal retreat: GIS-based mapping for sustainable urban planning in Villeneuve-lès-Maguelonne

Coastal risks : the 2021 Climate & Resilience Law provides a guide to map coastal retreat and assess its impact on land use and urban planning.

18 Feb 2025 | By project SATSDIFACTION



DINAMIS : National Institutional system for shared access to satellite imagery

DINAMIS centralizes high-resolution satellite data for scientific research and public policy, aiding territorial management and environmental monitoring.

19 Feb 2025 | By project SATSDIFACTION



The Walloon Geoportal: A Gateway to EO and Territorial Data

The Walloon Geoportal is the regional SDI providing geographic and Earth Observation data for Wallonia, freely accessible to all citizens.

11 Aug 2025 | By project SATSDIFACTION

Thank you!

Paldies!

www.interregeurope.eu/SATSDIFACTION

www.linkedin.com/in/satsdifaction/

satsdifaction@regione.veneto.it